

BRIMFIELD SHOW GUIDE

SEPTEMBER 3-8, 2024





THE WORLD'S LARGEST CURATED MARKETPLACE FOR VINTAGE & ANTIQUES.



#1 Trusted Vintage & Antiques Marketplace

Over 2 Million Monthly Visits • Award-winning Customer Service



SCOTT ANTIQUE MARKETS

Antiques, Interiors, and More!



Atlanta Expo Centers - Atlanta, GA

2024 Shows

SEP 12 - 15

DEC 12 - 15

OCT 10 - 13

NOV 7 - 10

**2ND WEEKEND
EVERY MONTH!**

Ohio Expo Center - Columbus, OH

2024 Shows

NOV 30 & DEC 1

DEC 21 & 22

800 - 1200

Booths



Antiques, Vintages, Collectibles and more!

740.569.2800 · www.scottantiquemarkets.com · P.O. Box 60, Bremen, OH 43107

Welcome to Brimfield!

Three times a year, the Brimfield shows attract thousands of dealers and shoppers from around the world looking to stroll down Memory Lane, add to their collection, find that perfect piece for that special spot or discover a new DIY project. Unique and eclectic old and vintage finds share the fields with antiques from all eras, repurposed projects, and decorative embellishments. A photo gallery of Brimfield finds can be found on our Instagram page @journal_of_antiques, a great way to experience Brimfield if you can't get here to do it in person – as is our Facebook page.

With 19 show fields and venues, some open daily and others only open for a few select days during the show week, it is hard to know where to start. Our best advice is to consult with the Show Schedule (page 3) to see what shows will be open while you are here, consult our Map (page 5) to see where each show is located along Route 20, and then start walking until something catches your eye. Our bet is you won't have to walk too far! Each show field has a community of professional dealers with a dazzling array of merchandise waiting to welcome you and answer your questions. For more information on what's offered on each show field, see page 7.

We hope you find this *Brimfield Show Guide* useful, here at the Brimfield shows for local places to stay, dine, and shop, and for learning about other upcoming antique and collectibles shows taking place around the country. You will also find a Shop Finder Guide for places to stop and antique shop along the way. For more information on upcoming shows and articles of interest, please visit our website at www.JournalofAntiques.com.

Maxine Carter-Lome

Maxine Carter-Lome, Publisher
Journal of Antiques & Collectibles



Brimfield Show Guide

Publisher

Maxine Carter-Lome
journalofantiques@gmail.com

Business Manager

Jeffrey L. Lome
jeffreylome@gmail.com

Managing Editor

Judy Gonyeau
editorial.journalofantiques@gmail.com

Sales Representatives

Jeffrey Lome
jeffreylome@gmail.com

Art Director

Lynn Cotterman

Production

Jill Montague

Subscriptions & Circulation

journalofantiques@gmail.com

508-347-1960

888-698-0734

JOURNALOFANTIQUES.COM

Mailings: P.O. Box 950
Sturbridge, MA 01566

A Weathervane Enterprises Publication

SUBSCRIBE TO THE JOURNAL TODAY!



One Year - 12 monthly issues ONLY \$35

Your Subscription Includes –

Monthly Digital Issues, All Print Issues, and Special Supplements

Please fill out the form below or subscribe online at www.journalofantiques.com/subscribe

My Name: _____ Phone: _____

Address: _____

City: _____ State: _____ Zip: _____

☐ VISA Card

☐ MasterCard

☐ Enclosed, a Check or Money Order

Signature: _____ Card No. _____ Expiration Date: ____/____/____

Email: _____

Call Today! Toll Free: 888-698-0734

GB9/24

or Clip & mail to: The Journal P.O. Box 950, Sturbridge, MA 01566 or email to journalofantiques@gmail.com

Dealer	Opening Day	Tue	Wed	Thu	Fri	Sat	Sun
Black Swan Meadows , 212-300-5999 www.brimfieldantiquesshows.com	Tues. 8 am	★	★	★	★	★	★
Brimfield Antique Shows, Hertans , 781-420-3375, www.brimfieldliveonline.com	Wed. 12 pm		★	★	★	★	★
Brimfield Auction Acres , 413-245-3436 www.brimfieldauctionacres.com	Fri. 8 am, Sat. 9 am				★	★	
Brimfield Barn , 727-415-2081	Tues. 7 am	★	★	★	★	★	★
Central Park Antique Shows , 413-455-4655, www.brimfieldcentralpark.com	Tues. 6 a.m.	★	★	★	★	★	★
Collins Apple Barn Antique Show , 413-237-6659, Showtime No. 413-245-4575	Tues. Daybreak	★	★	★	★	★	★
Crystal Brook , 413-245-7647	Tues. Daybreak	★	★	★	★	★	★
Dealer's Choice , 508-347-3929 www.brimfieldantiquescenter.net	Tues. 11 am	★					
Grand Trunk Antique Shows , 866-858-0789 413-519-3321	Tues. Daybreak	★	★	★	★	★	★
Green Acres , 413-245-6118	Tues. Daybreak	★	★	★	★	★	★
Heart-O-The-Mart , 413-245-9556	Wed. 9 am		★	★	★	★	★
Mahogany Ridge , 413-245-7220	Tues. Daybreak	★	★	★	★	★	★
May's Antique Market , 413-245-9271 www.maysbrimfield.com	Thurs. 9 am			★	★	★	
Midway , 508-347-3929 www.brimfieldantiquescenter.net	Tues. 6 am	★	★	★	★	★	★
N.E. Motel Antique Shows , 508-347-2179	Wed. 6 am		★	★	★	★	★
Quaker Acres Antique Shows , 413-245-6185	Tues. Daybreak	★	★	★	★	★	★
Shelton Antique Shows , 413-245-3591 www.brimfieldsheltonshows.com	Tues. Daybreak	★	★	★	★	★	★
Stephen's Place , 413-245-3185	Tues. 6 am	★	★	★	★	★	★
Sturtevant's Antique Shows , 413-245-7458 www.sturtevantantiquesshows.com	Tues. Daybreak	★	★	★	★	★	★
Treasure Trunk Tuesday , 413-245-3436 <i>Held at Brimfield Auction Acres</i>	Tues. 8 am	★					
Weekend Warrior Show , 781-420-3375 <i>Held at Brimfield Antique Shows, Hertans</i>	Sat. 8 am					★	★

Sept. 2024 Brimfield Show Schedule

Here Before Brimfield Week? Check Out These Nearby Shows:

Marier's Antique Flea Market, Rte 20, Palmer, MA
Thursday, August 29 through Monday, September 2, Open 7am

The Sturbridge Show Sturbridge Host Hotel, Rte 20, Sturbridge, MA
Monday, September 2, Early Bird at 8 am, General Admission at 10 am



BRIMFIELD ANTIQUE SHOWS®

Events & Auctions

*America's Most Exciting
Antiques & Vintage Events & Auctions!*



BRIMFIELD ANTIQUE SHOWS—HERTANS September 4-8

Hertans Show Field, 6 Mill Lane Road, Brimfield, MA

FROCKS & ROCKS! FASHION PREVIEW EVENT! SHOPPING & VINTAGE FASHION SHOW! Tuesday, September 3 at 7pm

Meet, greet & shop with Brimfield's most popular fashion & jewelry vendors!
Wholesale dealer to dealer pricing. Vintage Fashion Show featuring runway looks
that you can purchase! This is a free event in Hertans Hospitality Tent.

THE ORIGINAL BRIMFIELD AUCTION! September 5 at 6pm

Lic# 2321

Preview Thursday, Noon-Start of Auction • View Gallery on brimfieldlive.com
Bid Live In Person on Hertans Field. Over 300 Unreserved Lots

Hospitality Tent, 6 Mill Lane Road, Brimfield, MA

WEEKEND WARRIOR SHOW September 7-8

Free Admission • Hertans Show Field, 6 Mill Lane Road, Brimfield, MA

NEW HAMPSHIRE'S LARGEST ANTIQUE FLEA MARKET October 12 & 13

Deerfield Fairgrounds, 34 Stage Road, Deerfield, NH

For more information visit www.brimfieldlive.com •
follow us on  [@brimfieldlive](https://www.facebook.com/brimfieldlive) • or call 781-324-4400

2024 SCHEDULE OF SHOWS

Map to Brimfield Show Fields



30 Palmer Rd • Route 20



THE SHOPPING STARTS HERE...

3 Dealer Pavilions! Over 400 Booths

2024 DATES

September 4-8

Wednesday–Sunday

Opens Wednesday at 6 am

Admission \$5 Opening Day • Parking Central to All Fields

Shipping • ATM • Camp Sites

Tel: 508-347-2179 or Showtime: 508-808-2023



*Look for our Green and Gold Umbrellas at our
Food Court and you will find our Field.*

Bring your appetite!

www.antiques-brimfield.com
nemotelbrimfield@gmail.com

Les, Josh and Adam Skowyra

www.facebook.com/nemotelbrimfield


Showfield Features

Information subject to change.
Check showfield websites for up-to-date information.

	Opening Day Admission	Parking (addl. lots on map)	Food Trucks & More	# of Dealer Spaces	Pet Friendly on lease
Black Swan Meadows	★	★	★	250	★
Brimfield Antique Shows, Hertans	★	★	★	200+	★
Brimfield Auction Acres	★	★	★	450+	
Brimfield Barn				12	★
Central Park Antique Shows		★	★	130+	★
Collins Apple Barn Antique Show		★	★	20+	
Crystal Brook			★	35+	★
Dealer’s Choice	★	★	★	400+	★
Grand Trunk Antique Shows		★	★	50+	
Green Acres		★		75+	★
Heart-O-The-Mart	★	★	★	450+	
Mahogany Ridge			★	150+	★
May’s Antique Market	★		★	300+	★
Midway Antique Shows			★	30+	★
N.E. Motel Antique Shows	★	★	★	400+	★
Quaker Acres Antique Shows		★	★	150+	★
Shelton Antique Shows		★	★	100+	★
Stephen’s Place			★	20+	★
Sturtevant’s Antique Shows		★	★	75+	★

Handled by Dealers –

Restrooms:

Every showfield has porta-potties and wash stations.

Types of Antiques/Vintage Goods:

Each dealer buys and sells the types of goods they specialize in with some special finds and good stories. Have something in mind you hope to find? Ask the dealer. Usually there are more boxes of items still to be unpacked and displayed or a dealer has nearby access to their inventory. If they don’t have it, or don’t deal in that type of antique, ask if they know someone who does.

How To Pay

Cash is king, as they say, but many dealers will accept credit/debit cards, Venmo, PayPal, ApplePay, and more. ATMs are available at some fields. Dealers will likely hold what you wish to purchase while you get money or retrieve your checkbook. Many take checks if they are local and have your contact information.

Return Policies

Most of the time during a show like this it is a matter of buying “as is, where is” and no returns are allowed. However, if you are making a larger purchase, be sure to talk with the dealer about their return policy and how that would be handled.

Buying After the Show

If you spot something you really like but are not ready to make a purchase, ask for the dealer’s information and about the chance to purchase later if you change your mind. You may wish to take a picture of the item to refer to later.

Delivery

If you are visiting from far away, you may want to get your purchases delivered. It is not up to the Dealer to manage that, but some may. Otherwise, you can reach out to area offices for FedEx, UPS, USPS, etc. to see what they are offering for Brimfield Shows – some have on-site pickup.

Brimfield Showfield & Buying Info



1628 Park Street
Palmer, MA
(On Route 20)

Spaces: Kris 978-761-8136
Jack 978-265-6696

The Official Pre-Brimfield Show for 45 Years!

2024 SHOW DATES

AUG 29th - SEPT 2nd

Open 7AM - 4PM Daily Rain or Shine

Electricity throughout field - \$25 weekly rate
Handicap Access Restroom • \$5 Parking and always **FREE Admission**
10 x 20 Enclosed Tent and Table Rentals

THE STURBRIDGE SHOW

MONDAY, SEPTEMBER 2

EARLY BIRD ADMISSION
8 AM - 10 AM • \$50

GENERAL ADMISSION
10 AM - 5 PM • \$20

STURBRIDGE HOST HOTEL • Route 20, Sturbridge, MA
(jct. 90 Mass Pike & I-84 • GPS Address - 366 Main Street
www.TheSturbridgeShow.com • TheSturbridgeShow@gmail.com



May's Antique Market



'The Early Buyers Show'

Brimfield Dates 2024

September 5, 6, 7



Admission Opening Day Only - Opens 9am

www.maysbrimfield.com

413-245-9271

The Original
BRIMFIELD
AUCTION ACRES
- FORMERLY J&J PROMOTIONS -

BIRTHPLACE OF THE
Brimfield Rush



2024 SHOW DATES
(FRI & SAT ONLY)

SEPT. 6 + 7

OPEN FRI 8-4 \$5 ADMISSION
SAT 9-3 FREE ADMISSION
brimfieldauctionacres.com
35 Main St. Brimfield, MA 01010





Black Swan Meadows
40 Palmer Road • Route 20, Brimfield, MA

Spaces Available
September 3-8

Opening Day, Tuesday 8am
\$5 Admission

Scott • 212-300-5999
www.BrimfieldAntiqueShows.com

BRIMFIELD

Tuesday Thru Sunday
Central Park
Antique Shows

July 9-14
Sep 3-8 **Sept 3-8** Antiques & Collectibles

Opening at 6 AM Free Admission
Phone - 413-596-9257 Cell - 413-455-4655
www.brimfieldcentralpark.com



Collins Apple Barn
Antique Shows
52 Palmer Road, Rt. 20
Brimfield, MA 01010

Sept. 3 - 8
Opens at Dawn
Serving Breakfast & Lunch
Full Liquor License • ATM

413.237.6659
413.245.4575
(during show)
collinsapplebarn@charter.net



DEALERS WANTED
Pick Your Days (Daily Rates)

Located on
Rt. 20
Brimfield

RESERVE TODAY

1st To Open

BRIMFIELD
Week Starts At The
GRAND TRUNK
ANTIQUE SHOW
MAY JULY SEPT

866-858-0789

FREE Admission
Opening Day Tuesday
2024 Dates Sept 3-8
PRIME SPACES

2024 **BRIMFIELD** Celebrating 49 years!

SHELTON ANTIQUE SHOWS

DAYBREAK TUESDAY

2025 SHOW DATES:
May 13-18
July 8-13 • Sept. 2-7

SEPTEMBER 3-8

Free Admission • Pet Friendly • Showers
• 6 DAYS OF ACTION!!

Lois J. Shelton, PO Box 124, Brimfield, MA 01010
(413) 245-3591 • Since 1975
sheltons@prodigy.net • www.brimfieldsheltonshows.com

QUAKER ACRES
Antique Shows
Route 20 Brimfield, MA

September 3-8

"The Friendly Field in the Middle of all the action"

413-245-6185 • 413-668-6407 (c)
Email: Quakeracres@aol.com Lee Adams, Manager

STEPHEN'S PLACE
~ A QUALITY ANTIQUES SHOW ~
Route 20, 42 Palmer Road, Brimfield, MA
Opens Daybreak Tuesday

September 3-8

Dealer Space available 6AM Daily
Call: 413-245-3185 email: stephensantq@charter.net

STURTEVANT'S ANTIQUE SHOWS
Route 20, BRIMFIELD, MASS.

2024 SHOWS
September 3-8

DEALER SPACE AVAILABLE

Call or Write: Diane Sturtevant,
P.O. Box 468, Brimfield, MA 01010 **413-245-7458**

GREEN ACRES McCurdy Brothers

Rte. 20, Brimfield, MA 01010

September 3 - 8

Open Tuesday thru Sunday
(Dealer Space Available)

For information call (413) 245-6118
greenacresbrim@gmail.com



MA Lic. #2591

Running online auctions with estate jewelry, sterling silver, coins, sports cards and memorabilia, vintage comic books, and a wide variety of other fresh to the market antiques and collectibles. See centralmassauctions.com to view current auctions and to join our email list.

255 Park Ave. Suite # 1000 • Worcester, MA 01609

508-612-6111

info@centralmassauctions.com
www.centralmassauctions.com



While you're here visit

**BRIMFIELD WINERY
& BREWERY**

OPEN ALL WEEK

DURING ANTIQUE SHOW

visit **BRIMFIELDWINERY.COM**

Look for the big red barn at
**35 MAIN ST.
BRIMFIELD, MA**



Lots of New Additions, Fresh-to-Market!



**AUG. 28-
SEPT. 7:**
Open Daily
9am-5pm

SEPT 3-8:
**OPEN BY
APPOINTMENT**

(413) 539-1472
359 Stafford Rd., (Rt. 32), near the CT State Line,
Monson, Mass.

Open by appointment most anytime!

ANTIQUESATWINTERGARDENFARM.COM



HARDWICK
VINEYARD & WINERY



VISIT US

at Herten's Field

for wine, slushees, & sangria!

WINERY OPEN 7 DAYS A WEEK.

3305 Greenwich Road, Hardwick, MA

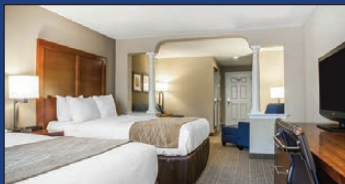


Comfort Inn & Suites, Sturbridge, MA

www.sturbridgecomfortinn.com (508) 347-3306

83 Hall Road (behind Cracker Barrel) Sturbridge, MA 01566

Easy access to both I-84 and I-90 (Mass Pike)



Friendly Award-Winning Staff, Complimentary Hot Breakfast, Indoor Pool & Outdoor Seasonal Pool, Fitness Room, Cocktail Bar & Lounge.
Visit us at www.sturbridgecomfortinn.com to learn more.

Lounge rental available for private events;
email sales@sturbridgecomfortinn.com to learn more about our group accommodations and/or lounge rental.

Sadie Green's Emporium

New
This Year:
Rare Books
& Records!

- Vintage clothing & jewelry
- Sterling jewelry
- Antique glass beads & stones
- Vintage findings
- Semi precious beads
- Antiques & Collectibles;
old, new, & gently used
- Displays for your business
including velvets for jewelry

320 Main St. - Rt. 131 • Sturbridge, MA
508-347-1449 • www.sadiegreens.com

**Junque,
Jewelry, & Gems
Wholesale & Retail**



OPEN DAILY 11AM - 5PM
during **Brimfield Flea Market**
or by chance or appointment

Laurie Boniface, Owner

508-208-6157



WELLSWORTH HOTEL
SOUTHBRIDGE, MA

**BOOK YOUR NEXT
BRIMFIELD STAY WITH US!**

14 Mechanic Street • Southbridge, MA 01550
508-765-8000 • WellsworthHotel.com



TripAdvisor Travelers' Choice Award Winner



All rooms and suites feature refrigerators, coffeemakers, high-definition TVs, premium bath amenities, & complimentary high-speed Wi-Fi.

PIONEER CANNABIS CO.

275 STURBRIDGE RD, BRIMFIELD, MA



BRIMFIELD'S DISPENSARY

Cannabis & Antiques

PioneerCannabisCompany.com

- 3 Miles from Show Fields
- Out of State IDs Accepted
- No Med Card Needed
- HUGE Variety of Products
- Friendly & Knowledgeable Staff
- High Quality & Lab Tested
- Products for Sleep & Pain



GUMMIES • JOINTS • VAPES • FLOWER

Please Consume Responsibly. This product may cause impairment and may be habit forming. For use only by adults 21 years of age or older.
Keep out of the reach of children.

ANTIQUES PRIMITIVES VINTAGE EPHEMERA POTTERY GIFTS

STURBRIDGE FLEA MARKET

Rt. 20

559 MAIN STREET, STURBRIDGE, MA 01518**Wed-Fri 10-5pm****3 LEVELS****Sat-Sun 10-5pm****A YEAR ROUND DESTINATION IN STURBRIDGE, MA**

AMISH FURNITURE FROM LANCASTER, PA



TABLES, KITCHEN ISLANDS, SERVERS, CORNER HUTCHES, TRASH BINS, STOOLS, CHAIRS, BOOKCASES, DESKS, BEDROOM SETS, PIE SAFES, AND MORE

VISIT www.SFMshop.com

VIEW SOME OF THE MANY ITEMS AVAILABLE

Find US on FACEBOOK, INSTAGRAM, & GOOGLE

413-263-9280

FURNITURE FOOD HOME DÉCOR ANTIQUES VINTAGE COLLECTIBLES

SEPT. 3-8

Look for the
BRIMFIELD SHOW GUIDE
on show fields,
in our **bright red**
"Take One" boxes along
Route 20, and at
JournalofAntiques.com

**Quaboag Book Shop**

Formerly The Book Bear

We carry over 100,000 used, rare
and out of print books for the
general reader, scholar & collector.

Bought - Sold - Traded

Open Wed-Sun 10am-6pm

(508) 867-8705

Receive 10% OFF
your purchase with this ad

80 West Main Street (Rt. 9), West Brookfield, MA

ST. ANNE SHRINE & GIFT SHOP

Open 10am - 5 pm Seven Days a Week!

16 Church St., Sturbridge, MA

508-347-7461*The Frostee is....*

A SEASONAL, FAMILY FRIENDLY

DRIVE-IN SERVING THE BEST FOOD,

DRINKS & ICE CREAM IN THE AREA SINCE 1956

WE CARRY 50+ FLAVORS OF PREMIUM ICE CREAM,

FROZEN YOGURT, NO SUGAR ADDED & DAIRY FREE CHOICES TOO!



SERVING THE FRESHEST SEAFOOD & "THE BEST LOBSTER ROLL AROUND"
SPECIALTY BURGERS, HOT DOGS, SALADS, BREAD BOWLS, HOMEMADE SOUPS,
APPETIZERS, KIDS MEALS AND OUR DELICIOUS ICE CREAM FLAVORS HELP
MAKE JANINE'S FROSTEE..... *"Worth the Drive from Anywhere"*

OPEN 6 DAYS A WEEK @ 11 AM**(CLOSED TUESDAYS)****FOLLOW US****413-967-7950**

CALL FOR TAKE-OUT

&

CURRENT HOURS**WE ACCEPT****WWW.JANINESFROSTEE.COM****FREE LIVE MUSIC WEEKLY**

your
HEALTH
matters

Organic &
Non-GMO
Nourishment

Supplements, Body Care, Natural Foods & More!

Fiske Hill Plaza • 71 Main Street (Route 131)
Sturbridge, MA
508-909-6966
Tuesday-Friday 10am-6pm • Saturday 10am-5pm

COMMUNITY FOCUSED WITH YOU IN MIND

20% OFF the regular price of any
ONE item store wide!
10% off if already on sale.

Exp 09.30.24

 **Alternatives
For Health
Herbal Apothecary**

Nature's Solution For Better Health

*Bulk Herbs & Teas
Flower Essences
Essential Oils
Herbal Remedies
Homeopathics*

426 Main Street • Sturbridge, MA • 508-347-2111

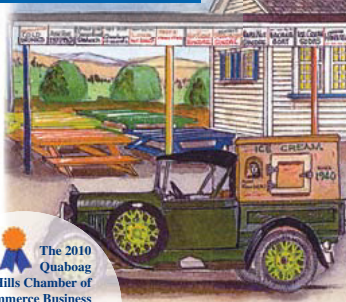
*Classes & Events • Massage, Reiki
Ear Coning*

**Hours: Mon, Wed, Thurs, Fri, 10-5
Sat 10-4 • Sun 12-4 • Closed Tues**
www.alternatives-4health.com

Alvin Rondeau's Dairy Bar
Serving Homemade Ice Cream Since 1940!

56 Flavors
5 No Sugar Added
5 Sorbet

Cheeseburgers • Hotdogs
Grinders • French Fries
Always Fresh Seafood!

 **(413) 284-0068**
**Route 32 North /
Ware Road, Palmer, MA
01069**

The 2010
Quabog
Hills Chamber of
Commerce Business
of the Year

circa 1940
3 miles off
Exit 63
Mass Pike

LOCAL ROOTS

**CLEAN CANNABIS.
CULTIVATED SUSTAINABLY.**

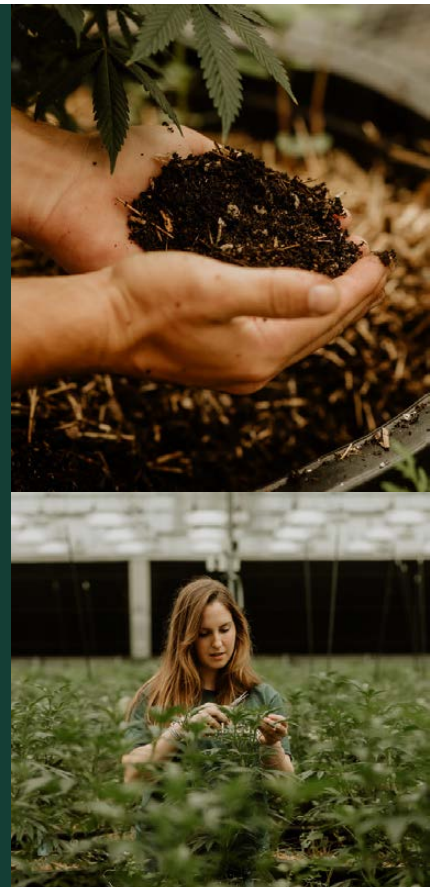
At Local Roots, we cultivate clean, organic cannabis for a pure, premium, and consistent experience. Explore our full range of cannabis products:

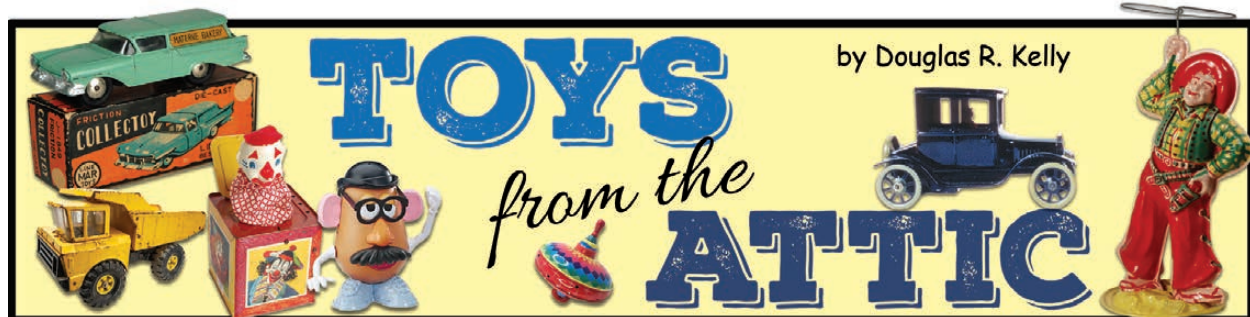
Flower • Pre-rolls • Edibles • and more

Sturbridge • 365 Main St. • 508-350-4111

www.localroots.cc

  @LocalRootsCC





Get the Lead Out

Sometimes a headline writes itself. “Get the Lead Out.” If only we could. The vast majority of die-cast toys and models made over the past 90-plus years will never suffer from what’s often called metal fatigue, but for those that do, it’s the end of the road. Although it’s been known to happen on rare occasions to models made in the last 20 years, to my knowledge most victims are pre-World War II toys made by such manufacturers as Tootsietoy (Dowst) here in the U.S. and Dinky Toys (Meccano) in Great Britain.

We’re not talking here about the heavier cast iron toys made by manufacturers like Arcade or Kenton. The condition is limited to toys made using this die-casting process: the injection of molten metal, under high pressure, into steel molds. The metal alloys used in this process varied in composition depending on the manufacturer, but generally speaking, by the 1930s, Tootsietoy and Dinky had left alloys composed of tin and lead behind. Both companies introduced zinc alloys to their processes during the Depression, and they contained various percentages of copper, iron, cadmium, nickel, magnesium, aluminum, and even tin and lead. But the zinc alloys, known by names such as mazac and zamak, had greater purity than the old tin and lead mixtures, offered better strength and durability to the product.

Trace Impurities

But problems cropped up when one of two things happened. Either impurities were introduced to the alloy mixture (trace amounts of other metals) or the percentage of metals such as cadmium or lead was varied, even if only slightly. In either scenario, the resulting castings were ticking time bombs: although it would have been hard to see when the toy was new, cracks and corrosion would eventually begin to afflict the toy as it slowly lost structural stability.

Douglas R. Kelly is the editor of Marine Technology magazine. His byline has appeared in Antiques Roadshow Insider; Back Issue; Diecast Collector; RetroFan; and Buildings magazines.



Dinky Toys number 28 delivery van in “Maison De Bonneterie” livery.

Photo courtesy Vectis Auctions

Some toys actually grow in length as deterioration advances, causing warping of body panels and roofs. In the worst cases, the toy literally starts to crumble away. The rare Dinky Toys’ number 28 delivery van, shown left, is well along the road to destruction. Despite this, and that it’s the only example known to exist in the “Maison De Bonneterie” livery, it sold for \$3,100 in a Vectis Auctions sale in the U.K. in 2008.

Unlike health concerns about lead in some newer toys, my experience has been that collectors of pre-World War II toys are more interested in how to repair the toy, or at least delay its demise, than they are in lead exposure. Some collectors try applying cyanoacrylate glue to the underside of an affected toy, along the crack lines, which I understand can help stabilize the toy, at least temporarily. But ultimately it’s a losing battle as the process continues over time.



Meccano’s Mini Dinky models often suffer from cracking and corrosion due to inferior metal alloys used in production.



The baseplate on this Mini Dinky Oldsmobile has expanded and distorted, resulting in parts of the body breaking off.

Several years ago, I was talking with Andrew Reed, a die-cast specialist at Vectis, and the subject of metal fatigue in pre-war toys came up. He told me that many collectors, both here in the U.S. and elsewhere, won’t buy a pre-war Dinky if it means it’ll have to be shipped by airmail. “When you send a pre-war that way—unless you’ve insulated it and really overpackaged it—as soon as it goes into the hold, it will expand in the cold, because of its lead content. When it [lands, naturally] it gets warmer. When we [ship] them out, we have to include special insulation to ensure they don’t get cold.”

The problem was largely eradicated after World War II, but there are exceptions. In 1968, a Mini Dinky series of 1:65 scale die-cast models made in Hong Kong. These beautiful little models were plagued by metal fatigue from the start. They can be found intact, however, and models like the Fiat station wagon and Ferrari 250 LM are worth the hunt.



APPLES

THE HARVEST IS IN

Open for the Season

VISIT THE FARM FOR:

- Just Baked Pies
- Sweet Cider
- Cider Donuts
- Cheese

Southbridge Road
Warren, MA
5 Minutes from Sturbridge
148 N - follow signs
(413) 436-7122
Open 10am - 6pm

Clip Coupon!

FREE
1/2 Dozen
Cider Donuts
With this coupon
and purchase
Good Tuesday
thru Thursday

BREAKFAST


Annie's Country Kitchen

AND LUNCH

Visit us @ anniescountrykitchen.com

Sat./Sun. 7 am - 12 pm (Breakfast only)
Mon. to Fri. 7 am - 2 pm

508.347.2320 • 140 Main St., Sturbridge, MA 01566




NOW OPEN



Condesa


restaurante mexicano & tequila bar

Outdoor Seating Next to Planet Fitness

178 MAIN ST STURBRIDGE MA 01566



508 213 3337



Eat something delicious tonight.

*Come and enjoy yourself in our historic Southbridge location.
Our food, drink and conversation is just what you need.*

BRAISED SPECIALS • PIZZETTAS • SEAFOOD • STEAKS
PASTA • HOMEMADE DESSERTS • GLUTEN FREE
OPTIONS AVAILABLE • FULL LIQUOR LICENSE
NON-ALCOHOLIC MOCKTAILS

We're serious about great food. And that's no tall tale.

Tues-Sat. opens at 4 p.m. • Closed Sun-Mon • Full Liquor License • Call for Reservations
858 Main Street, Southbridge • 508-764-3349 • finsandtales858.com

Pick your own

Strawberries - June
Blueberries - July
Apples - Sept.
Pumpkins - Oct.



- Our own Apple Cider
- Cider Donuts
- Pies & breads
- Preserves

108 Crystal Pond Road
Eastford, CT
860-974-1150

Check our website
for events and seasonal hours.

Like us on  www.buellsorchar.com



Join us for

Sturbridge Herbfest

September 28, 2024

Classes • Vendors

9:30 - 4:30
Sturbridge Common
Rt 131, Sturbridge, MA 01566

Rain or Shine
Pre-registration \$15
At the Door \$25
Includes all classes
Intensives \$40

For more information, reservations
and vendor applications
please contact Salli Greene
at Alternatives for Health

(508) 347-2111
sargreene@gmail.com

PRE-REGISTER AT
www.sturbridgeherbfest.com



Sponsored By 



In and Around the Brimfield Region

ONLINE SHOPS

Antiques.co.uk

Phone: +44 7557400728
Email: iain@antiques.co.uk
Website: www.antiques.co.uk
Open 365 days a year 24 hours a day.

Ruby Lane

Vintage Begins Here
Website: www.rubylane.com

CONNECTICUT

Antiques on the Farmington

10 Depot Street, (Collinsville), Canton, CT
Phone: 860-693-0615
Email: a.bermanatty@outlook.com
Website:
www.facebook.com/Antiquesonfarmington
Hours: 10am-5pm, 7 days a week

Coventry Arts and Antiques

1140 Main Street, Coventry, CT
Phone: 860-208-8215
Email: annecburke@msn.com
Website: www.coventryartsandantiques.com
Open Saturday-Sunday, 11am-4pm
Closed Monday through Friday

Nathan Hale Antique Center

1141 Main Street, Rte 31, Coventry, CT
Phone: 860-498-7400 or 860-230-4214
Website: www.nathanhaleantiquecenter.com
Email: jr.haddad@outlook.com
Open Wednesday-Friday 11am-4pm,
Saturday & Sunday 10am-5pm

Silk City Antiques & Decor

845 Main Street, Manchester, CT
Phone: 860-533-1263
Website: www.silkcityantiques.com
Open Tuesday, Wednesday, Friday 10am-5pm,
Thursday 10am-6pm, Saturday 10:30am-4pm

The Barn

45 North Main Street, Marlborough, CT
(located in the old Marlborough Barn)
Phone: 860-295-1114
Website: www.shopsatmarlboroughbarn.com
Open Tues, Wed, Thur, Fri 11am-5pm,
Sat 10am-5pm, Sun. 10am-4pm, Closed Mon.

Antiques Marketplace

109 Main Street, Putnam, CT
Phone: 860-928-0442
Email: rickscoolstuff@hotmail.com
Website:
www.facebook.com/AntiquesMarketplace
Open Wed-Mon 10am-5pm, Closed Tuesdays

Stratford Antique Center

400 Honeyspot Road, Stratford, CT
Phone: 203-378-7754, Fax: 203-380-2086
Website: www.stratfordantique.com
Email: stratfordantique@aol.com
Open daily 10am-5pm

3 Great Shops in One Seacoast NH Destination!

*Come visit our historic properties filled with a wide variety of antiques, art and collectibles.
Our eclectic shops feature over 100 dealers offering buyers a true shopping destination.
Accepting Dealer Applications • Tax Free NH*

Route 1 Antiques



Route 1 Antiques

- Since 1975 -

106 Lafayette Road
Hampton Falls, NH 03844 • (603) 601-2554

www.route1antiques.com

**Open Wed - Mon 10am-5pm
Closed Tuesdays**

The Collector's Eye



The Collector's Eye

- Since 1973 -

Antiques, Collectibles, Gifts

132 Portsmouth Avenue
Stratham, NH • (603) 772-6205

www.collectorseye.com

**Open Wed - Mon 10am-5pm
Closed Tuesdays**

Brickhouse 76



Brickhouse 76

A Gallery of Antiques and Decorative Arts

76 Lafayette Road
Hampton Falls, NH 03844

603-926-0366

Open Thur - Sat 11am-4pm

MAINE

Orphan Annie's Antiques

96 Court Street (Across from the courthouse),
Auburn, ME
 Phone: 207-782-0638
 Website: www.orphananniesme.net
 Email: orantiques@myfairpoint.net
 Open: Daily 10am-5pm, Sunday 12-5pm
 Warehouse Sale every Monday 10am-1pm

Stoney Creek Antiques

881 Civic Center Drive, **Augusta, ME**
 Rt 27, 3 miles N of I-95 Exit 112
 Phone: 207-626-9330
www.facebook.com/stoney.creek.antiques
 Open Year round. Tuesday - Saturday 10am-5pm

Cabot Mill Antiques

14 Maine Street, **Brunswick, ME**
 Phone: 207-725-2855
 Email: cabot@waterfrontme.com
 Website: www.cabotiques.com
 Open: Daily 10am-5pm

Hathaway Mill Antiques

10 Water Street, **Waterville, ME**
 Phone: 207-877-0250
 Email: info@hathawaymillantiques.com
 Website: www.hathawaymillantiques.com
 Open: Wednesday-Sunday 10am-5pm,
 Closed Monday & Tuesday

Bo-Mar Hall Antiques & Collectibles

1622 Post Road, **Wells, ME**
 Phone: 207-360-0943
 Email: bonhep@hotmail.com
 Like Us on Facebook: www.facebook.com/Bo-Mar-Hall-Antiques-Collectibles
 Open daily, year-round, 10am-5pm

MASSACHUSETTS

Great Road Vintage

469 Great Road, **Acton, MA**
 Phone: 978-429-8322
 Email: greatroadvintage@gmail.com
 Website: www.greatroadvintage.com
 Facebook: www.facebook.com/greatroadvintage
 Open: Wednesday-Saturday 11am-5pm,
 Sun. Noon-5pm, CLOSED Monday & Tuesday

The MEWS at Brewster Antiques

2926 Rte. 6A (diag. across from Ocean Edge)
Brewster, MA
 Phone: 508-896-4887, 508-776-9098
 Email: bheapg7@comcast.net
 Website: www.the-mews-at-brewster-antiques.com
 See website for seasonal hours

New England Brass Refinishing & Campello Antiques

1085 Main Street, **Brockton, MA**
 Phone: 508-583-9415
 Website: www.campelloantiques.com
 Email: brassmanbethoney@aol.com
 Please call for an appointment available
 7 days a week

North Bridge Antiques

28 Walden Street, **Concord, MA**
 Phone: 978-371-1442
 Website: www.northbridgeantiques.com
 Open Monday-Saturday 10am-5pm,
 Sunday Noon-5pm

Thoreaully Antiques

27 Walden Street, **Concord, MA**
 Phone: 978-371-0100
 Email: bumpybeeler@yahoo.com
 Website: www.thoreaullyantiques.com
 Open Monday-Friday 10am-5:30pm,
 Saturday 10am-6pm, Sunday 11am-5pm

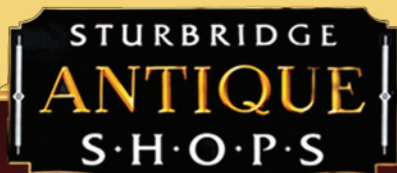
The Berkshire Galleries of Great Barrington

964 S. Main Street, **Great Barrington, MA**
 Phone: 413-644-8848
 Website: www.theberkshiregalleries.com
 Open 7 days a week 10am-5pm
 (check website for winter hours)

Visit our full Antiques Shop Finder page at www.journalofantiques.com

Beautiful Antiques Unusual Collectibles

Featuring over 80 dealers
 11,000 square feet
 on 2 floors
 Open 7 Days 10am-5pm



Open until 8pm during Brimfield Shows
 Only 8 miles from Brimfield

Visit the most active group shop in Central
 New England and browse our extensive
 selection of quality, affordable antiques.



• Porcelain • Silver • Glass • Ephemera • Furniture • Art
 • Textiles • Tools • Primitives • Toys • Metals • Books • Postcards • Sporting • Clothing • Jewelry & much more!



128 Charlton Rd., (Rt. 20) **Sturbridge, MA 01566**
 508-347-2744 (Next door to Wal-Mart Plaza) www.SturbridgeAntiqueShops.com



NATHAN HALE ANTIQUE CENTER

1141 Main Street, Rte 31, **Coventry, CT 06238**
 (860) 498-7400 or (860) 230-4214

Open Wednesday - Friday 11am-4pm; Saturday & Sunday 10am-5pm

Quality Merchandise Friendly Staff All Credit Cards Accepted
 Joyce Haddad, Proprietor: jr.haddad@outlook.com Loren Ouellette, Manager
 Like us on Facebook • Find us at www.nathanhaleantiquecenter.com

Windsong Antiques

346 Route 28 at 29/124,
Harwich Port, MA
 Phone: 508-432-1797
 Email: sandyhall1@comcast.net
 Website: www.windsongantiques.com
 Open: Daily 11am-5pm, Sundays 12-4pm
 Winter hours may vary. Please call ahead.

Canal Street Antique Mall & Design Center

181 Canal Street, **Lawrence, MA**
 Phone: 978-685-1441 and 978-965-5903
 Website: www.canalstreetantiquemall.com
 Email: canalstreetantiquemall181@gmail.com
 Open: Daily 10am-5pm, Thurs til 7pm.

The Uptown Store

266 Main Street, **Lee, MA**
 Phone: 413-358-0170
 Email: info@theuptownstore.org
 Website: www.theuptownstore.org
 Open Mon., Wed., Thurs. Fri 10am-4pm,
 Sat. 10am-5pm, Sun. 11am-4pm

Upton House Antiques

275 King Street (Rte. 2A-110), **Littleton, MA**
 Phone: 978-486-3367
 Website: www.uptonhouseantiques.com
 Open: Wed., Thurs., Fri., & Sat. 10am-4pm
A call ahead is advised.

Journal

OF ANTIQUES & COLLECTIBLES

Acushnet River Antiques

50 Kilburn Street, **New Bedford, MA**
 Phone: 508-992-8878
 Email: ariverant@aol.com
 Website: www.acushnetriverantiquesllc.com
 Open Mon.-Sat. 10am-5pm, Sun. 11am-4pm

Antique Junction

1294 S. Main Street, **Palmer, MA**
 Phone: 413-531-1936
 Open: Wed-Sun 10am-4pm
 (Mon & Tue - Call for appt.)
 Open daily before and during Brimfield Antique Shows for extended hours.

Palmer Antiques Co-Op

1239 So Main Street, **Palmer, MA**
 Phone: 413-283-3373
 Email: palmerantiquescoop@comcast.net
 Website: www.facebook.com/PalmerAntique
 Open Thursday-Saturday, 9am-5pm,
 Sunday 10am-4pm

Nu-Tiques at the Barn

486 West Street (Route 31), **Paxton, MA**
 Phone: 508-754-2340
 Website: www.nu-tiques.com
 Open: Weekends April - December 10am-4pm

**Heaven on Earth Antiques**

20 N. Main Street, **Sherborn, MA**
 Phone: 508-314-1593
 Email: heaventiques@yahoo.com
 Website: www.heavenonearthdesigns.com
 Open Wed-Sun 11am-5pm
 Call or email for private shopping!

**Live More Hunt Less Consignment**

149 Main Street, **Stoneham, MA**
 Phone: 781-435-2366
 Email: Livemorehuntlessconsignment@gmail.com
 Open Mon-Sat: 10am-6pm, Sunday: 11am-5pm

Sturbridge Antique Shops

128 Charlton Road (Rt. 20), **Sturbridge, MA**
 Next to Walmart Plaza
 Phone: 508-347-2744
 Website: www.sturbridgeantiquesshops.com
 Open daily 10am-5pm

Vintage and Antique Textiles

538 Main Street, **Sturbridge, MA**
 Phone: 508-347-2229
 Website: www.vintageandantiquetextiles.com
 Email: barbarawright535@charter.net
 Open Saturday and Sunday 10am-5pm,
 weekdays by chance or appointment
 Extended Brimfield hours

Cabot Mill Antiques

Visit our 16,000 Sq. Ft. Showroom Featuring
 160 High Quality Authentic Antique Displays
 with New Stock Arriving Daily



Open 7 Days a Week!

VOTED BEST OF
MIDCOAST MAINEOpen Daily
10am-5pm

207-725-2855

Located Inside Historic Fort Andross
 a Restored 1820's Mill on the Androscoggin
 14 MAINE STREET • BRUNSWICK 04011
 www.cabotiques.com
 e-mail: cabot@waterfrontme.com

Cash, Check, are all accepted

Air Conditioned

Ample Parking

QUALITY ANTIQUES
 New Merchandise Arriving Daily!

VOTED BEST OF
MID-MAINE

- 10,000 Sq. Ft. Multi Dealer Emporium
- Quality Antiques
- Well Lit, Clean and Organized
- Featuring Authentic Antiques to Quality Mid-Century Modern
- Discover the Gem that is Hathaway Mill Antiques, sister shop to Cabot Mill Antiques!!

HATHAWAY MILL
 ANTIQUES

Hathaway Mill Antiques
 Open Wed.-Sun. 10am-5pm
 Closed Mon. & Tues.
 10 Water St., Waterville, ME
207-877-0250

Like us on Facebook
 Follow us on Instagram!
www.hathawaymillantiques.com
 email: info@hathawaymillantiques.com



Bay View Arts LLC

402 Humphrey St., **Swampscott, MA**
 (Across from the entrance to Fishermen's Beach)
 Store Phone: 781-592-1033
 Alice Cell: 978-754-5112
 Email: pandmpaintings22@gmail.com
 Open Wednesday-Saturday 12pm-4pm,
 Sunday 12-3pm or by appointment

Bernat Antiques

89 Elmdale Rd., **Uxbridge, MA**
 Phone: 508-278-5525
 Email: ccorinna30@gmail.com
 Website: www.facebook.com/bernantique
 Open Tuesday-Sunday 10am-5pm;
 Fridays til 7pm

Stanley Mill Antiques

146 Mendon Street, **Uxbridge, MA**
 Phone: 508-779-0334
 Email: stanleymillantiques@gmail.com
 Open: Wednesday - Sunday 10am-5pm

Stone Mill Antique Center

44 East Main Street, **Ware, MA**
 Phone: 413-277-0137
 Open Thurs.-Sat. 10am-5pm, Sun. Noon-4pm

Wayside Antiques & Collectibles

1 Prospect Street, **West Boylston, MA**
 Near the Old Stone Church
 Phone: 508-835-4690 during business hours only
 Website: www.facebook.com/Wayside-Antiques-Collectibles
 Open: Monday-Saturday 11am-5pm,
 Sunday: Noon-5pm

Quaboag Book Shop

80 West Main Street
West Brookfield, MA
 Website: www.facebook.com/bookreadersfind
 Open Wednesday-Sunday 10am-6pm

NEW HAMPHIRE**Concord Antiques Gallery**

137 Storrs Street, **Concord, NH**
 Phone: 603-225-6100
 Email: cag@concordantiquesgallery.com
 Website: www.concordantiquesgallery.com
 Open 7 Days a Week 10am-5pm

Sage Farm Antiques

5 Exeter Road, **N. Hampton, NH**
 Phone: 603-964-3690
 Email: info@sagefarmantiques.com
 Website: www.sagefarmantiques.com
 Open first Friday of the month: April, May, July,
 August, October, November (First & Third
 Fridays), December Closed January-March. See
 website for upcoming show dates and hours.

Brickhouse 76

76 Lafayette Road, **Hampton Falls, NH**
 Phone: 603-926-0366
 Open Thursday, Friday, Saturday 11am-4pm

Route 1 Antiques

106 Lafayette Rd, **Hampton Falls, NH**
 Phone: 603-601-2554
 Website: www.route1antiques.com
 Open daily, 10am-5pm

Antiques on Elm

321 Elm Street, **Manchester, NH**
 Phone: 603-606-1736
 Email: antiquesonelm@comcast.net
 Website: www.antiquesonelmmanchester.com
 Open 7 days a week: Mon.-Sat. 10am-6pm;
 Sun. 10am-5pm

Time Capsule Antiques & More

23 Plaistow Road (Rte 125), **Plaistow, NH**
 Phone: 603-974-7126
 Email: timecapsuleantiquesandmore@gmail.com
 Website: www.timecapsuleantiquesandmore.com
 Open: Sun. 11am-4pm, Mon. 10am-5pm,
 Tue. Closed, Wed. 10am-5pm, Thurs. 10am-
 5pm, Fri. 10am-5pm, and Sat. 10am-5pm

The Collector's Eye

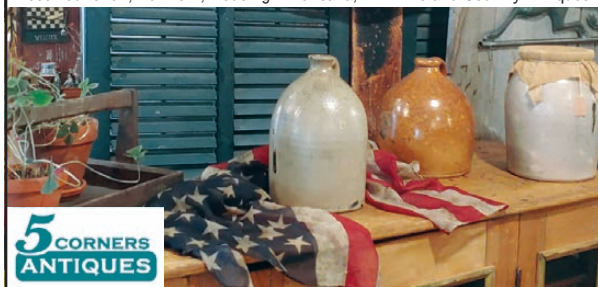
132 Portsmouth Avenue, **Stratham, NH**
 Phone: 603-772-6205
 Email: info@collectorseye.com
 Website: www.collectorseye.com
 Open Mon., Wed., Thurs., Fri., Sat., Sun.,
 10am-5pm. Closed Tuesdays

Flying Pig Antiques

867 Hwy 12, **Westmoreland, NH**
 Phone: 603-543-7490
 Email: flyingpigantiquesnh@gmail.com
 Website: www.flyingpigantiquesnh.com
 Open Daily, 10am-5pm

See us @ Brimfield Quaker Acres #102

45 Dealers located in the Historic Downtown Snowflake Canning Building in
 Essex Junction, Vermont, Housing Americana, Primitive and Country Antiques



**5 CORNERS
ANTIQUE**

11 Maple St., Rte. 117, Essex Junction, VT
 Hours: Mon-Sat 10-5, Sun 11-4 802-878-6167

PALMER ANTIQUES
Co-Op
 1239 So MAIN ST, PALMER MA 01069
Over 100 Quality Dealers
 Antiques & Collectibles, Primitives
 Furniture, Tools, Glassware & More!
 Store Hours:
 Thursday, Friday, Saturday, 9am to 5pm
 Sunday, 10am to 4pm
 Dealer Inquiries Welcome Gift Cards Available
 (413)283-3373 palmerantiquescoop@comcast.net facebook/PalmerAntique

Join our popular directory!

**ANTIQUES
SHOP FINDER**



An economical way to advertise your shop, mall,
 or antique center in *The Journal* and online!

To Join our Shop Finder Directory, 508-347-1960
 or visit www.journalofantiques.com

Flying Pig Antiques
& Auctions

Over 40 Quality Dealers
 Conveniently located between
 Keene, NH & Bellows Falls, VT
OPEN 10-5 DAILY

867 Rt 12, Westmoreland, NH 03467
 603-543-7490 www.flyingpigantiquesnh.com

ANTIQUES SHOP FINDER In and Around the Brimfield Region *(continued)*

RHODE ISLAND

Antiques at the Drawing Room of Newport

152 Spring Street, **Newport**, RI
Phone: 401-841-5060
Email: drawrm@hotmail.com
Website: www.drawrm.com
Open Daily, 10am-5pm

Rhode Island Antiques Mall

345 Fountain Street, **Pawtucket**, RI
Phone: 401-475-3400
Email: info@riantiquesmall.com
Website: www.RIAntiquesMall.com
Open Mon.-Wed. 10am-5pm,
Thurs. 10am-7pm, Fri-Sat 10am-5pm,
Sun. 11am-5pm
Open every day except 4th of July,
Thanksgiving, and Christmas Day

Nostalgia Antiques & Collectibles

236 Wickenden Street, **Providence**, RI
Phone: 401-400-5810
Email: nostalgiaprov@gmail.com
Website: www.nostalgia providence.com
Open Mon.-Thurs. 11am-6pm,
Fri.-Sun. 11am-5pm

VERMONT

Stone House Antique Center

557 Vt. Route 103 South, **Chester**, VT
Phone: 802-875-4477
Website: www.stonehouseantiquescentervt.com
Open 7 days a week 10am-5pm

5 Corners Antiques

11 Maple Street (Route 117)
Essex Junction, VT
Phone: 802-878-6167
Open Mon.-Sat. 10am-5pm, Sun. 11am-4pm

The Vermont Antique Mall

5573 Woodstock Road, **Quechee**, VT
Exit 1 I-89; 2 miles West U.S. Rte 4
Phone: 802-281-4147
Website: www.vermontantiquemall.com
Open 7 days, 10am-5pm
Closed Easter, Thanksgiving, Christmas Day &
New Year's Day.

The Factory Antique Mall

50 Lodge Lane, Suite 106, **Verona**, VA
The largest antique mall in America & growing.
Now over 135,000 sq. ft.
Phone: 540-248-1110
Website: www.factoryantiquemall.com
Open 7 days Monday-Thursday 10am-5pm
Friday-Saturday 10am-6pm, Sunday 12-6pm



**To view a full list
of our Shops,
please visit our
Antiques Shop Finder
page at
journalofantiques.com**

VIRGINIA

Duke's Antique Center

1495 N Lee Highway (Rt. 11) **Lexington**, VA
Phone: 540-463-9511
Email: dukedukeantiques@gmail.com
Website: www.dukedukeantiques.com
Open 365 days 9am-6pm

**Visit 1,600+
shops online at
AntiqueTrail.com
or follow 27 state
maps right to
their door!**



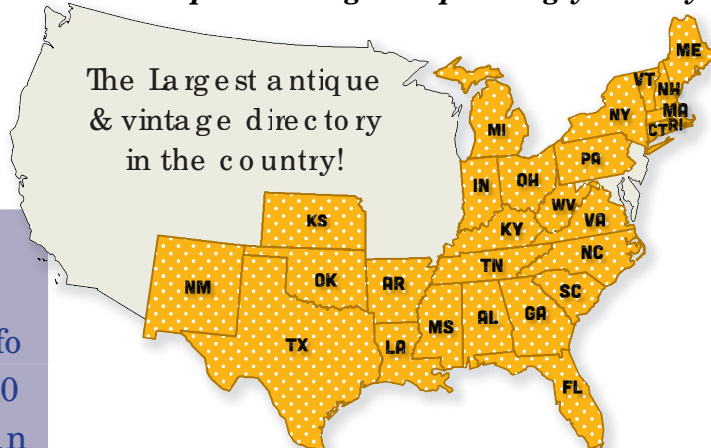
**Stop by the
Brimfield Antique
Shows Ticket & Info**

**Booth on the corner of Rte 20
and Mill Lane Rd to pick up an
Antique Trail.com brochure.**

..... *Antique*
TRAIL.com

ANTIQUETRAILROUTE.COM

View antique & vintage shops along your way!



**Request info & maps at
256-797-5640 or Info@AntiqueTrail.com**

SHOPS · SHOWS · AUCTIONS · MARKETS · B&Bs · EVENTS · ONLINE STORE



The Signs of History

I've always loved signs. They can tell you so much about the history of a place, an industry, a specific time period, and more. Here, I've picked three signs from my collection that I love and that have a few things in common. They all have at the core of their business, travel, whether through actual movement via train and bicycles or sound traveling over the airwaves. They also share bird iconography to denote different meanings. In this case, I think they were used to convey that sense of connection that travel provides.

The Flying Crow

This drumhead sign came from the collection of a dear friend, Brian Maiher. It was "picked" on the show around four years ago. In 1928, the Flying Crow was a passenger train that was part of the Louisiana & Arkansas Railway. It ran from Kansas City, MI, to Port Arthur, TX, to New Orleans, LA, from 1928 through 1968. The term "drumhead" refers to a type of removable sign that was mounted on the back of named passenger trains. They were commonplace in the first half of the 20th century in North America.

This sign—reverse painted on glass with original gold leaf—has withstood the test of time. It hangs in my office and will be passed down to my children. Drumhead signs were round in shape, resembling small drums—hence the name—and most included an internal lighting source that illuminated the signs at night.



Victor Bicycles

The Overman Wheel Company was a bicycle manufacturing company in Chicopee Falls, MA from 1882 to 1900. The flagship product of the company was the Victor Bicycle. The very first Victor bicycle was the first American-made three-wheeler. The innovative design of the bike, which had interchangeable parts, made it possible

for repair shops to make small repairs without having to dismantle the whole bike. These bikes were the highest quality of their day, yet the company eventually went bankrupt.

This Victor Bicycles porcelain curved sign was found in a very old junkyard in the New York area around six years ago. As you know, my brother and I collect bicycles and have ever since we were little kids. I've owned several Victor models over the years. One I currently have is a 54-inch Victor Highwheel (with a large front wheel and a much smaller back wheel).

This sign is one of only a few Victor Bicycles porcelain signs (Victor bicycles were made from 1883 to 1900) that survives to this day. The sign would have been sent to a dealer to display on their building as an official Victor Bicycles agent. It could be up for sale.



The Majestic Eagle

This Majestic Eagle "sign" is from an authorized Majestic radio dealer display circa 1920s. Painted in bold colors with the eagle resting atop the globe, the piece is over two feet high and the eagle's wingspan is 42". It was found in a home in Southern IL and was owned by a gentleman who was a dealer for Majestic radios. In the late 1920s, Chicago's Grigsby Grunow Co. began marketing its Majestic Electric radio as the "Mighty Monarch of The Air." The bald eagle mascot matched their biggest claim to fame that they "Fly higher" than any radio waves and reach anyone. These were typically made of paper mâché material and are very rare to find in any kind of condition, let alone as pristine as this one.

Collecting anything that was made of PMH that survived almost 100 years is very rare to find. These range anywhere from \$3,000 to \$5,000. This one is in my office – and is not for sale.



Best known for his co-hosting role on The History Channel's long-running hit, American Pickers, Rob Wolfe is also a seasoned antique dealer. From vintage signs to antique cars and motorcycles, and everything in between, Rob has an extensive knowledge of, and passion for, all things antique. He's been collecting unique items and learning about their history since early childhood and today that passion can be seen at his showroom in Bettendorf, Iowa where this summer he'll host the annual Bettendorf Americana Car show and Antique Auction.

Continuous Shows and Flea Markets

January-December: Alameda, CA

Alameda Point Antiques Faire

3900 Main Street

1st Sunday of the Month, 6am-3pm

510-522-7500, www.AlamedaPointAntiquesFaire.com

January-December: Los Angeles, CA

Santa Monica Antique & Vintage Market

At the Santa Monica Airport Interim Open Space,

3233 Donald Douglas, Loop

1st & 4th Sunday Every Month, 7am-3pm

310-909-9001 Phone or Text

www.SantaMonicaAirportAntiqueMarket.com

January-December: Jewett City, CT

College Mart Flea Market

Slater Mill Mall, 39 Wedgewood Drive

Sundays 9am-4pm

860-376-3935, www.leoneauctioneers.com

January-December: Lambertville, NJ

Golden Nugget Antique Flea Market

1850 River Road, Route 29

Wed., Sat. & Sun. 6am-4pm, Indoor Shops open 8am

400 outdoor flea market tables open 6am-4pm

609-397-0811, info@gnflea.com, www.gnflea.com

January-December: Wallingford, CT

Redwood Country Flea Market

170 S. Turnpike Road

Open Every Friday, Saturday, Sunday

Fri. 6am-1pm, Sat./Sun. 6am-3pm

203-269-3500

www.facebook.com/redwoodcountryfleamarket

January-December: Mt. Dora, FL

Renningers Weekly Market

20651 US-441

Fri. 10am-4pm, Sat. & Sun. 9am-5pm

352-383-3141, www.renningers.net

January-December: Washington, D.C.

The Flea Market at Eastern Market

7th & C Street SE, Capital Hill

Every Sunday, 10am-5pm

Diverse Markets, 202-215-6993

info@easternmarket.net, www.easternmarket.net

January-December: El Cajon, CA

San Diego Antique and Vintage Show & Sale

311 Highland Avenue

Third Saturday of the Month, 9am-1pm

Larry, 619-368-2055, larrystonebooks@gmail.com

January-March: Brookline, NH

Winter Sundays Brookline Antiques Market

Brookline Event Center, 32 Proctor Hill Road

Open Every Sunday, 5-5:45am Dealer Set Up / Early

Buying \$20. Show 5:45-11am FREE

603-582-4491, www.brooklineeventcenter.com

February 7-January 1, 2025: Dover, NH

First Wednesday Antiques Flea Market

Dover Elks Lodge, 282 Durham Road

8am-12noon

Gurley Antique Shows, 207-396-4255,

rachelgurley@gmail.com, www.gurleyantiqueshow.com

March-December: Woodbury, CT

Woodbury Antiques and Flea Market

44 Sherman Hill Road (jct 6 & 64)

Saturdays, 7:30am-2:30pm, weather permitting

thenewwoodburyfleamarket@gmail.com,

203-263-6217, www.woodburyflea.net

April 28-October 27: Puslinch (Guelph), Ontario, Canada

Aberfoyle Market Sundays Only Market

57 Brock Road South

8am-4pm

877-763-1077, www.aberfoyleantiquemarket.com

April 21-October 27: Sandwich, MA

Sandwich Weekly Antiques & Collectibles Show

34 Quaker Meeting House Road

Sundays, 7am-12noon

Lisa, 508-685-2767, www.thesandwichbazaar.com

April 3-October 30: Sandwich, MA

Sandwich Weekly Antiques & Collectibles Show

34 Quaker Meeting House Road

Wednesdays, 6am-12noon

Lisa, 508-685-2767, www.thesandwichbazaar.com

May-September: Dover, NH

Dover Antique & Vintage Market

Dover Elks Lodge, 282 Durham Road

10am-2pm

Gurley Antique Shows, 207-396-4255,

rachelgurley@gmail.com, www.gurleyantiqueshow.com

May 18-October: Woodstock, NY

Mower's Saturday & Sunday Flea Market

Maple Lane

8am-6pm

845-679-6744, woodstockfleamarket@hcc.rr.com

www.mowerssaturdayfleamarket.com



51 State Hwy
Rte 6,
Wellfleet MA
508-349-0541

September: Thursdays, Saturdays, Sundays,
and Holiday Monday: 9/2

October: Saturdays, Sundays and
Holiday Monday: 10/14

All markets open 8am - approx. 3pm

Located at the Wellfleet Drive-In Theatre
www.WellfleetCinemas.com

The Sandwich Flea Market

WEDNESDAYS	SUNDAYS
APRIL 3 - OCT. 30	APRIL 21 - OCT. 27
6am-12noon	7am-12noon

located outside at Oakcrest Cove
34 Quaker Meeting House Rd. • Sandwich, MA

for more info
call Lisa
508.685.2767

TheSandwichBazaar.com

ART ★ ANTIQUES ★ JEWELRY ★ LOCAL FOOD

Wednesday, Saturday & Sunday 6AM to 4PM

GOLDEN NUGGET
Flea Market SINCE 1967

Lambertville, NJ

Visiting Brimfield?

We're a great stop along the way.

Sellers: Hassle-Free Reservation System

Buyers: 300 Outdoor Tables + 50 Indoor Shops

Visit the many Lambertville-New Hope area antique
shops and art galleries. Need a hotel to stay, ask us!

www.gnflea.com | info@gnflea.com | (609) 397-0811

California's Largest Antique Show!

MICHAAN'S AUCTIONS PRESENTS
ALAMEDA POINT
ANTIQUES
FAIRE

**800+ outdoor
booths of
antiques &
vintage
– 1st Sun of
every month!**

Visit www.AlamedaPointAntiquesFaire.com for more info!

California's Largest Vintage Fashion Event!

Alameda

VINTAGE FASHION FAIRE

Next event: FRI & SAT SEPT. 13 & 14, 2024

90+ booths of vintage from every era!

1190 W. Tower Ave Bldg. 11 in Alameda, CA

Visit VintageFashionFaire.com for more info • Follow us @VintageFashionFaire



Child Collectors

Beatrice — Beatrice is seven years old and in first grade (she also takes advanced courses with older children throughout the day.) Though her name may sound old-fashioned, Beatrice herself is anything but conventional. She excels in her schoolwork, takes piano lessons, and is an excellent artist. She also collects objects, not just anything, but specifically Magic Mixies. These are kits that enable children to learn magic as they blend ingredients. Each Mixie is different, with unrelated elemental powers. For example, one changes color when water is added; another opens its eyes when a magnet is nearby. And yet, a third can create a new furry friend. Beatrice, lovingly displays her collection proudly as well. In fact, when the family built a new bookshelf for Beatrice, she said to her mother, “Mommy, this shelf is for collecting.”



Beatrice's bookshelf displays her collection of Magic Mixies. photo courtesy of her mother

Children Who Collect — The reported incidence of children who collect varies from 30 and 40 percent to perhaps 80 percent. Part of this disparity is that the literature in this area is sparse. We do know that natural items are commonly collected and that there is a difference in what the two genders collect. Girls are more likely attracted to visually appealing items and boys to objects connected to war or sports.

Psychologists have noted that collecting behavior in children often begins around 6 to 8 years of age. This correlates with the time children begin developing executive skills and a sense of control over their surroundings. Developmental psychologist, Jean Piaget (1896-1980), even designated collecting as belonging to a ‘concrete operational stage’ in children. This is when they begin to understand logic and use it in reasoning regarding objects in their surroundings and experiences.

Children's Motivations to Collect —

The instigating factors for children to collect include escaping boredom and reality, curiosity about their collectibles, and learning more about them. Other reasons include fulfilling a passion for the objects they desire, wanting to distinguish themselves from others, and expanding their social world by possessing objects they collect. Often, more than one motivation was revealed in surveys. And some children had more than one collection.

In one examination, parents were mentioned three times as frequently as friends and family when examining the child's wish to collect. Grandparents were also cited. In Beker and Gentry's paper, *Kids as Collectors: A Phenomenological Study of First and Fifth Graders*, Tony, one of the fifth graders, told one of the interviewers he started his collection of sports cards because: “My Grandpa had some cards and I just started to like them, and I just kept adding and adding them to my collection ‘cause I saw them at his house and I started to collect them.”

John Lennon was a child collector too. Interestingly enough, a relative, Stanley Parkes, gave John a classic stamp album when he was 10 years old. This started Lennon on his childhood philatelist collecting journey, his first passion, well before he developed his second, that of a singer-songwriter.

Summary — It is clear the urge to collect begins early in life. Not only that but there may also be more child collectors than adults. Though information overall about child collectors is anything but complete at this point, child collectors appear to have many of the same motives as adults.

*FYI, there is a YouTube channel for Magic Mixies named “MooseTube Squad” here:
www.youtube.com/@MooseTubeSquad.*



*Shirley M. Mueller, M.D., is known for her expertise in Chinese export porcelain and neuroscience. Her unique knowledge in these two areas motivated her to explore the neuropsychological aspects of collecting, both to help herself and others as well. This guided her to write her landmark book, *Inside the Head of a Collector: Neuropsychological Forces at Play*. In it, she uses the new field of neuropsychology to explain the often-enigmatic behavior of collectors. Shirley is also a well-known speaker. She has shared her insights in London, Paris, Shanghai, and other major cities worldwide as well as across the United States. In these lectures, she blends art and science to unravel the mysteries of the collector's mind.*

STORMVILLE AIRPORT 

ANTIQUE SHOW & FLEA MARKET

Aug 31 & Sept 1
Oct 12 & 13 • Nov 2

8AM TO 4PM • RAIN OR SHINE • OVER 400 EXHIBITORS
Exhibitor Space Available, 845-221-6561

Now in it's 54th Year! **Free Admission & Parking • No Pets**
428 Rt. 216, Stormville, NY
STORMVILLEAIRPORTFLEAMARKET.COM

Barrows Show Promotions
Gala New Years Show

JANUARY 1, 2025
Glastonbury, Connecticut
Celebrating 44 years with over 125 exhibitors throughout New England

Contracts are available! **Please call**
860-342-2581
830-342-2611



Creative advertising
Cheap hotels
Walkable
Huge crowds
Inside

Vendor info
@bigfleamarket.com



THE DULLES EXPO CENTER

Chantilly, VA



PHONE: (757) 430-4735



THE DC BIG FLEA ANTIQUES MARKET EVENT 2024

Sept. 21-22
Nov. 2-3
\$10 both days
Sat. 9-6 Sun. 11-5


@bigfleamarket.com
info@danorepromotions.com
www.thebigfleamarket.com

Collins Gifts

Sturbridge Doll, Bear & Miniatures Show & Sale



October 6, 2024
10am-3pm
Sturbridge, MA
Sturbridge Host Hotel



EXPERIENCE STURBRIDGE
Like A Local!


603-969-1699 • Collinsgifts14@aol.com • Collinsgifts.com

Walker Homestead's
Antiques & Primitive Goods Show
Saturday, September 28th
10-3

Admission \$8, free parking **No Pets Allowed**

Over 40 of the best country antiques & primitive goods dealers scattered on the lawns and back fields of a 1698 colonial saltbox, live music, food and fun for all!!!

Walker Homestead, 19 Martin Rd, Brookfield, MA 01506
www.walkerhomestead.com **508-867-4466**





Attention antique enthusiasts & collectors

Have your art, furniture,
and decorative objects
repaired, restored,
reupholstered, refinished,
or reframed at Trefler's!

DISCOUNT UP TO
10% OFF

WHEN YOU MENTION BRIMFIELD24*

*Some restrictions apply



TREFLER'S

*Bringing new life to your
favorite things since 1921*

29 Tower Road
Newton, MA 02464

(617) 965-3388

www.trefler.com



HISTORIC NEW ENGLAND SUMMIT 2024

CONVENING LEADING VOICES

Join cutting-edge thought leaders in preservation, culture, arts, and government who share inclusive, creative strategies for strengthening the livability and vitality of communities across New England and beyond. Summit 2024 themes include:

Sustainability and Climate Change

Cultural and Artistic Heritage

Community Advocacy and Civic Participation

Reframing History Education

Affordable Housing and Urban Development

The Future of New England Cities

REGISTER TODAY

NOVEMBER 14 & 15

IN PERSON & LIVESTREAM

WESTIN PORTLAND HARBORVIEW
PORTLAND, MAINE



The program also features special performances, cultural activities, networking opportunities, and more.

Historic New England invites you to engage with our Summit 2024 speakers in addressing some of today's most complex and pressing challenges that inform our collective futures. Register today!

Add your voice to the conversation! #HNESummit

[SUMMIT.HISTORICNEWENGLAND.ORG](https://summit.historicnewengland.org)

HISTORIC NEW ENGLAND | SUMMIT
2024

Journal

OF ANTIQUES & COLLECTIBLES

P.O. Box 950, Sturbridge, MA 01566

COLE'S ANTIQUES & COLLECTIBLES SHOWS



**2024
FALL SHOW
Inside Building
October 10-19**

**Outside Building
October 10-26**

**Check our
website for
updates**

*One of ROUND TOP
Texas Antique Week's
finest and most
popular shows!*

200 Dealers in 63,000 Sq. Ft.
A/C Building & Outside Annex Building
Food & drink concessions, too.

Grinding on premises.

Browse and shop for top of the line
antiques & collectibles featuring American
primitives, country linens, flow blue, china,
Oriental & Persian rugs, fireplace items,
Western collectibles, arts & crafts, pottery,
jewelry, Victorian & American oak
furniture, fine art, glassware, rare clocks,
lamps, silver, paper goods, postcards, toys.

Free parking! Free admission!

Located at Highway 237 & FM 954 Warrenton, Texas
For information and space rental call Brittany (832) 655-5995
colesantiqueshow.com