

BRIMFIELD SHOW GUIDE

MAY 13-18, 2025



THE JOURNAL OF
25th
Anniversary
ANTIQUES & COLLECTIBLES
2000-2025





**The World's Largest Curated Marketplace
for Vintage & Antique Collectibles.**



www.rubylane.com



SCOTT ANTIQUE MARKETS

Antiques, Interiors, and More!



Atlanta Expo Centers - Atlanta, GA

2025 Shows

APR 10 - 13

JUL 10 - 13

MAY 8 - 11

AUG 7 - 10

JUN 12 - 15

SEP 11 - 14

**2ND WEEKEND
EVERY MONTH!**

Ohio Expo Center - Columbus, OH

2025 Shows

NOV 29 & 30

DEC 20 & 21

800 - 1200

Booths



Antiques, Vintages, Collectibles and more!

740.569.2800 · www.scottantiquemarkets.com · P.O. Box 60, Bremen, OH 43107

Welcome to Brimfield!

Join the many collectors, dealers, designers, decorators, and “home curators” who scour the 19 show fields at Brimfield Antique Shows for the items from the past that draw their interest. Whether you are seeking antique, vintage, historic, or one-of-a-kind finds that come with fascinating tales, you have come to the right place.

Brimfield can be overwhelming for new visitors, and this Guide highlights the how’s, where’s, and when’s to find what you are searching for.

- **Show Schedule: Page 3** – Turn to page 3 to see a list of the fields that line this stretch of Route 20, when they open and close, and how to reach the show field managers/owners.

- **Map of Showfields: Page 5** – Take a few minutes to explore the area map. Learn where the parking is located and where ATMs can be found. (FYI, cash is the payment of choice for most dealers in the fields.)

- **Showfield and Buying Info: Page 7** – This is where you will find all kinds of information about the amenities offered at different fields, including food trucks, Opening Day admissions for some locations, and pet policies, along with helpful hints on how to shop this plethora of picks set out by the thousands of dealers throughout the show.

Want more? Read the advertisements for more information on this show, the region, antique and vintage shops, upcoming shows, and more. Visit our website (journalofantiques.com) and Facebook pages for more insights, and monitor our Instagram page (@journalofantiques) to get a real feel for what is happening at the Brimfield Shows. Then, return in July and September for more excitement and fresh finds in the fields.

Happy hunting and collecting!



Celebrating 25 years of sharing the joy of antiques & collecting!

**Advertise your Antique
Show, Shop, or Auction with us!**

For more information, visit journalofantiques.com



Brimfield Show Guide

Publisher / Business Manager

Nick Boschetto
Nick@joac.online

Managing Editor

Judy Gonyeau
editor@joac.online

Art Director

Lynn Cotterman

Production

Jill Montague-Kaitbenski

Info

Info@joac.online

Sales

Sales@joac.online

508-347-1960

JOURNALOFANTIQUES.COM

Mailing / UPS and FedEx

Shipping Address:

113 Main Street, Unit 2
Sturbridge MA 01566

Copyright 2025 All rights reserved

Here Before Brimfield Week? Check Out These

May PRE-Brimfield Shows

May 8-12: Marier's Antique Flea Market, Rte 20, Palmer, MA, Open 7am

May 12: The Sturbridge Show, Sturbridge Host Hotel, Rte 20, Sturbridge, MA
Early Bird at 8 am, General Admission at 10 am

Dealer	Opening Day	Tue	Wed	Thu	Fri	Sat	Sun
Black Swan Meadows , 212-300-5999 www.brimfieldantiqueshow.com	Tues. 8 am	★	★	★	★	★	★
Brimfield Antique Shows, Hertans , 781-324-4400, www.brimfieldlive.com	Wed. 12 pm		★	★	★	★	★
Brimfield Auction Acres , 413-245-3436 www.brimfieldauctionacres.com	Fri. 8 am, Sat. 9 am				★	★	
Brimfield Barn , 727-415-2081	Tues. 7 am	★	★	★	★	★	★
Central Park Antique Shows , 413-455-4655, www.brimfieldcentralpark.com	Tues. 6 a.m.	★	★	★	★	★	★
Collins Apple Barn Antique Show , 413-237-6659, Showtime No. 413-245-4575	Tues. Daybreak	★	★	★	★	★	★
Crystal Brook , 413-245-7647	Tues. Daybreak	★	★	★	★	★	★
Dealer's Choice , 508-347-3929 www.brimfieldantiquescenter.net	Tues. 11 am	★					
Grand Trunk Antique Shows , 866-858-0789 413-519-3321	Tues. Daybreak	★	★	★	★	★	★
Green Acres , 413-245-6118 www.greenacresantiques.com	Tues. Daybreak	★	★	★	★	★	★
Heart-O-The-Mart , 413-245-9556	Wed. 9 am		★	★	★	★	★
Mahogany Ridge , 413-245-7220	Tues. Daybreak	★	★	★	★	★	★
May's Antique Market , 413-245-9271 www.maysbrimfield.com	Thurs. 9 am			★	★	★	
Midway , 508-347-3929 www.brimfieldantiquescenter.net	Tues. 6 am	★	★	★	★	★	★
N.E. Motel Antique Shows , 508-347-2179 508-347-2179 during show www.antiques-brimfield.com	Wed. 6 am		★	★	★	★	★
Quaker Acres Antique Shows , 413-245-6185	Tues. Daybreak	★	★	★	★	★	★
Shelton Antique Shows , 413-245-3591 www.brimfieldsheltonshows.com	Tues. Daybreak	★	★	★	★	★	★
Stephen's Place , 413-245-3185	Tues. 6 am	★	★	★	★	★	★
Sturtevant's Antique Shows , 413-245-7458 www.sturtevantantiqueshow.com	Tues. Daybreak	★	★	★	★	★	★
Treasure Trunk Tuesday , 413-245-3436 <i>Held at Brimfield Auction Acres</i>	Tues. 8 am	★					
Weekend Warrior Show , 781-420-3375 <i>Held at Brimfield Antique Shows, Hertans</i>	Sat. 8 am					★	★

May 2025 Brimfield Show Schedule



BRIMFIELD ANTIQUE SHOWS®

Events & Auctions

*America's Most Exciting
Antiques & Vintage Events & Auctions!*



BRIMFIELD ANTIQUE SHOWS—HERTANS

May 14-18 • July 9-13 • September 3-7

Hertans Show Field, 6 Mill Lane Road, Brimfield, MA

WEEKEND WARRIOR SHOW

May 17-18 • July 12-13 • September 6-7

Free Admission • Hertans Show Field, 6 Mill Lane Road, Brimfield, MA

BRIMFIELD NORTH!

NEW HAMPSHIRE'S LARGEST ANTIQUE FLEA MARKET

Memorial Day Weekend: May 24-25 • October 11-12

Deerfield Fairgrounds, 34 Stage Road, Deerfield, NH

BRIMFIELD ADIRONDACKS

July 25-27

North Hudson, NY

TRAVELING SHOW

You never know where our Traveling Show will pop up next!
Sign up for our email list at brimfieldlive.com
and be the first to know!

For more information visit www.brimfieldlive.com

or follow us on  [@brimfieldlive](https://www.facebook.com/brimfieldlive)

Advance Tickets are Available on Our Website. Apply to Be a Vendor for Any of the Shows on Our Website. Call 781-324-4400 for more information.

2025 SCHEDULE OF SHOWS

Map to Brimfield Show Fields



BRIMFIELD'S DISPENSARY



PIONEER CANNABIS CO.

275 Sturbridge Road, Brimfield, MA



PioneerCannabisCompany.com

- 3 Miles from Antique Show
- Out of State IDs Accepted
- No Medical Card Needed
- HUGE Variety of Products
- Friendly & Knowledgeable Staff
- All Products Lab Tested
- Products for Sleep & Pain



EDIBLES • JOINTS • VAPES • FLOWER & MORE!

Please Consume Responsibly. This product may cause impairment and may be habit forming. For use only by adults 21 years of age or older. Keep out of the reach of children.

Showfield Features

Information subject to change.
Check showfield websites for up-to-date information.

	Opening Day Admission	Parking (addl. lots on map)	Food Trucks & More	# of Dealer Spaces	Pet Friendly on lease
Black Swan Meadows	★	★	★	250	★
Brimfield Antique Shows, Hertans	★	★	★	200+	★
Brimfield Auction Acres	★	★	★	300+	
Brimfield Barn				12	★
Central Park Antique Shows		★	★	130+	★
Collins Apple Barn Antique Show		★	★	20+	
Crystal Brook			★	35+	★
Dealer’s Choice	★	★	★	250+	★
Grand Trunk Antique Shows		★	★	50+	
Green Acres		★		75+	★
Heart-O-The-Mart	★	★	★	350+	
Mahogany Ridge			★	150+	★
May’s Antique Market	★		★	300+	★
Midway Antique Shows			★	30+	★
N.E. Motel Antique Shows	★	★	★	250+	★
Quaker Acres Antique Shows		★	★	150+	★
Shelton Antique Shows		★	★	100+	★
Stephen’s Place			★	20+	★
Sturtevant’s Antique Shows		★	★	75+	★

Handled by Dealers –

Restrooms:

Every showfield has porta-potties and wash stations.

Types of Antiques/Vintage Goods:

Each dealer buys and sells the types of goods they specialize in with some special finds and good stories. Have something in mind you hope to find? Ask the dealer. Usually there are more boxes of items still to be unpacked and displayed or a dealer has nearby access to their inventory. If they don’t have it, or don’t deal in that type of antique, ask if they know someone who does.

How To Pay

Cash is king, as they say, but many dealers will accept credit/debit cards, Venmo, PayPal, ApplePay, and more. ATMs are available at some fields. Dealers will likely hold what you wish to purchase while you get money or retrieve your checkbook. Many take checks if they are local and have your contact information.

Return Policies

Most of the time during a show like this it is a matter of buying “as is, where is” and no returns are allowed. However, if you are making a larger purchase, be sure to talk with the dealer about their return policy and how that would be handled.

Buying After the Show

If you spot something you really like but are not ready to make a purchase, ask for the dealer’s information and about the chance to purchase later if you change your mind. You may wish to take a picture of the item to refer to later.

Delivery

If you are visiting from far away, you may want to get your purchases delivered. It is not up to the Dealer to manage that, but some may. Otherwise, you can reach out to area offices for FedEx, UPS, USPS, etc. to see what they are offering for Brimfield Shows – some have on-site pickup.

Brimfield Showfield & Buying Info

Walker Homestead's



Antiques & Primitive Goods Show

Saturday, June 14, 2025

10 a.m. - 3 p.m.

Admission \$10.00, No Pets Allowed

19 Martin Road, Brookfield, MA 01506
www.walkerhomestead.com 508-867-4466

THE

TAILGATE



Questions?

Call Ian
860-781-0081

or Kris
508-341-6870

2025 DATES

Saturday, April 19th
 Saturday, May 24th
 Saturday, June 28th
 Saturday, July 26th
 Saturday, August 30th
 Saturday, September 20th
 Saturday, October 18th
 Saturday, November 15th

Shop Opens at 8 am

Coffee & Pastries

Free Admission

\$45 Set-Up Fee

Flying Pig Antiques

867 Rt 12, Westmoreland, NH

Flying Pig Antiques



OPEN DAILY 10-5

867 Rt 12

Westmoreland, NH 03467

603-543-7490

Watch for
 Flying Pig Auctions
 LIVE PREVIEW
 at Flying Pig Antiques
 on-line auction
 liveauctioneers.com

**50
 Quality
 Dealers
 all in
 one
 shop!**

Walker Homestead's Antiques & Primitive Goods Show



Saturday, September 27th
10 am - 3 pm

Admission \$10, No Pets Allowed

19 Martin Road, Brookfield, MA 01506
www.walkerhomestead.com 508-867-4466



Black Swan Meadows

40 Palmer Road • Route 20, Brimfield, MA

Spaces Available
May 13-18

July 8-13 • September 2-7

Opening Day, Tuesday 8am
\$5 Admission Opening Day

Scott • 212-300-5999
blackswanmeadows.com

QUAKER ACRES

Antique Shows

Route 20 Brimfield, MA

May 13-18
July 8-13 September 2-7

*"The Friendly Field in the
Middle of all the action"*

413-245-6185 • 413-668-6407 (c)
Email: Quakeracres@aol.com Lee Adams, Manager



BLUE CABOOSE STATION

VINTAGE RESTORATIONS & ANTIQUES



Our QR code brings you to (www.bluecaboosestation.com) where you can see the whimsical projects we are working on, find links to our Esty Shop & our YouTube Videos. Stop by and see us in person @ the Brimfield Flea Market 2025 and ask us about our 1950 Eli Bridge Ferris Wheel we brought home from York, ME.

We are located @ New England Motel "backside of the Motel & Food Court" M-7

GREEN ACRES

McCurdy Brothers

Rte. 20, Brimfield, MA 01010

May 13 - 18
July 8 - 13 • Sept. 2 - 7

Open Tuesday thru Sunday
(Dealer Space Available)

For information call (413) 245-6118
greenacresbrim@gmail.com

DEALERS WANTED
Pick Your Days
(Daily Rates)

Located on
Rt. 20
Brimfield

RESERVE TODAY

1st To Open

BRIMFIELD

Week Starts At The



GRAND TRUNK ANTIQUE SHOW

MAY JULY SEPT

866-858-0789

FREE Admission

Opening Day
Tuesday

2025 Dates
May 13-18
July 8-13
Sept 2-7

PRIME SPACES

STURTEVANT'S ANTIQUE SHOWS

Route 20, BRIMFIELD, MASS.

2025 SHOWS
May 13-18
July 8-13, September 2-7

DEALER SPACE AVAILABLE

Call or Write: Diane Sturtevant,
P.O. Box 468, Brimfield, MA 01010 **413-245-7458**

Schoharie Colonial Heritage Association
presents the

Spring Antiques In Schoharie

New Location

May 31 & June 1, 2025
Sat. 10am-5pm
Sun. 11am-4pm

143 Depot Lane, Schoharie, NY 12157
schoharieheritage.org



Country Kitchen
On Site FREE Parking
\$6 Admission



Ruth Anne Wilkinson
Show Manager
(518) 231-7241

Jen Patterson, SCHA Office
(518) 295-7505

In support of the Schoharie Valley Railroad Museum,
and the 1743 Palatine House Museum
SchoharieHeritage.org



PALMER ANTIQUES

Co-Op

1239 So MAIN ST, PALMER MA 01069

Over 100 Quality Dealers

Antiques & Collectibles, Primitives
Furniture, Tools, Glassware & More!



Free Coffee



Come Meet Jake!

Store Hours:
Thursday, Friday, Saturday, 9am to 5pm
Sunday, 10am to 4pm

Dealer Inquiries Welcome Gift Cards Available

(413)283-3373 palmerantiquescoop@comcast.net [facebook/PalmerAntique](https://facebook.com/PalmerAntique)



Breweriana and Rob Wolfe: A Passion for Collecting

Among the many categories of collectibles I encounter, one that stands out for historical significance and nostalgic appeal is breweriana. This niche area of collecting encompasses items related to the beer and brewing industry. It includes everything from vintage beer cans and bottles to advertising signs, tap handles, coasters, trays, and beer-related clothing. Over time, I have uncovered some of the most unique pieces.

The golden age of breweriana is considered to be the late 19th and early 20th centuries when breweries across the United States flourished. During this time, companies used creative and colorful advertising to stand out in a competitive environment. Each item tells a story reflecting the cultural, economic, and social trends of its time. Breweriana is more than just a hobby – it's a way to preserve a piece of American history.



Blackhawk came from the Davenport, IA, factory in the 1930s. This bottle is valued at \$1,500.

My interest in Breweriana is deeply rooted in my love for Iowa history. Growing up I was exposed to the world of antiques and collectibles at an early age. Some of my favorite memorabilia are from local places like Blackhawk Brewery, Independent Malting Company, and Potosi Brewery in Wisconsin.

I have had the opportunity to explore countless collections, many of which include rare and unique brewery items. Beer trays, coasters, tap handles, and bottle openers are items that are often overlooked. I have found several vintage tap handles, some of which were custom-made by specific breweries for bars.

Whether it's pre-prohibition beer bottles, a neon sign from a defunct brewery, or a vintage beer tray, I approach each find with genuine excitement and respect for its history. Numerous

items date back to the 1900s. Neon signs advertising beer brands are some of the most iconic pieces in breweriana because many of these companies were only open for a short time. Local breweries once thrived all across the country, many of which were central gathering places.

Nostalgia draws many collectors to these items as they remind them of their youth.

Beer advertising signs, in particular, often invoke these memories with their bold colors, playful imagery, and catchy slogans. Breweriana offers a tangible connection to the past. Each item reflects the trends, values, and challenges of its time.

At left: This Canadian Mountie represents Drewrys Brewing Company, founded in McHenry, IL, in 1877. Drewrys originated in Winnipeg, Manitoba, Canada, where it was called Drewry's Lake of the Woods Brewery. After moving, the first case of Drewry's Ale was shipped to President Franklin D. Roosevelt because of his involvement in repealing Prohibition.



For example, pre-prohibition items are reminders of when the brewing industry was thriving, only to be brought to a halt by the 18th Amendment.

Alternatively, post-prohibition items celebrate the resurgence and the creativity of breweries that worked to rebuild their brands.

With so many different types of items to choose from, collectors can focus on specific categories, such as signs, bottles, and tap handles, or build a more eclectic collection. This diversity ensures there's always something new to discover, making breweriana a lifelong passion for many. It's irresistible.



Porcelain beer trays. Value ranges from \$600 to \$2,500.

Best known for his co-hosting role on The History Channel's long-running hit, American Pickers, Rob Wolfe is also a seasoned antique dealer. From vintage signs to antique cars and motorcycles, and everything in between, Rob has an extensive knowledge of, and passion for, all things antique. He's been collecting unique items and learning about their history since early childhood and today that passion can be seen at his showroom in Bettendorf, Iowa, where Rob hosted the annual Bettendorf Americana Car Show and Antique Auction.

Rob Wolfe of *American Pickers* Meet & Greet at Brimfield Auction Acres May 16: 10-11AM and 2-3:30PM



BRIMFIELD, MA – Brimfield Auction Acres, birthplace of the world-famous Brimfield Antique Shows, will host a special Meet and Greet with Rob Wolfe, of History Channel's popular reality show *American Pickers*.

Rob will be out and about throughout the day, filming, interacting with dealers & shoppers with two scheduled "meet & greet" sessions on the property at the Brimfield Winery Wine Garden. The two meet-ups are from 10-11AM, and 2-3:30PM.

More about Rob: With an impressive track record spanning over 35 years, Robert has tirelessly pursued his passion for all things vintage and motorized. His unrelenting quest has taken him to the far corners of the world, unearthing treasures and unraveling the captivating stories behind each piece he discovers.

Rob's journey as an everyday archaeologist began at a tender age of 8 when he stumbled upon the joy of refurbishing bicycles for profit. This early experience ignited a lifelong fascination with historical artifacts, prompting him to expand his expertise to encompass a diverse range of antique items. Guided by the belief that every object holds a narrative waiting to be retold, Robert strives to restore these treasures to their rightful place in history.

As the brother of Mike Wolfe, Rob has had the honor of joining forces with him on the popular reality show, *American Pickers*, featured on the History Channel. Together, they have traversed the length and breadth of the United States, delving into forgotten barns and garages, unearthing what they affectionately term "rusty gold."

Whether you are a collector, fellow enthusiast, or simply captivated by the allure of the past, Robert invites you to join him for this interactive discussion at Brimfield Auction Acres.

To learn a little bit more about Rob's insight into picking, here are three tips he shared with the *Des Moines Register* last July:

Tip 1: Keep listening, especially to people in the picking and antiques businesses.

"When I was growing up, I got out of high school, and I think most high school students think this way. They think to themselves, 'Well, school's over. I get to stop thinking. I get to stop learning,'" he said.

What he learned, though, was to really listen to the people at swap meets and antique shows, the people who were selling their treasures.

"Back in those days, there was no Google. We didn't have a computer. We didn't have a cellphone, so that kind of forced you into reading books, reading magazines, listening to old guys at swap meets," Wolfe said. "... I'm like, 'Hey, if you can just stop and learn, if you go to a swap meet, listen to an older guy talk.'"

Tip 2: Collect things you like.

Wolfe has a sweet spot for old Americana, vintage cars and advertising memorabilia.

"It doesn't matter what you buy in this world, but if you buy something, buy it because you like it, not because you think you're going to make money on it," Wolfe said.

Tip 3: Listen to and seek out the stories behind the items you're buying.

Anyone who has watched *American Pickers* knows that the people who sell their antiques always have a tale to tell about how something came into their possession ... "The story is the key to any of the stuff that we're doing," he said. "I mean, you can buy an item and it can be a \$5 item, but that \$5 item has the most awesome story that goes with it."



Tip 4: A "no" doesn't mean you can't learn.

"I love when they tell me flat out, 'Nothing's for sale.' And I love to turn the tables on that and be like, 'OK, I don't want to buy it. I just want to learn,'" Wolfe said.

Tip 5: Get your family involved.

Wolfe said to talk to family members about some of the prized possessions they own so you know the story behind the object. That item becomes more personal when you know the story behind it.

Meet & Greet: Don't miss the opportunity to meet Rob Wolfe, professional picker (and one of the favorite columnists for *Journal of Antiques and Collectibles*). Saturday, May 16 from 10-11AM and 2-3:30PM.

BRIMFIELD

Tuesday Thru Sunday
Central Park
 Antique Shows

July 8-13
 Sep 2-7 **May 13-18** Antiques & Collectibles

Opening at 6 AM Free Admission
 Phone - 413-596-9257 Cell - 413-455-4655
www.brimfieldcentralpark.com

Art ~ Jewelry ~ Antiques ~ Local Food

The Sandwich Flea Market

Antiques & Collectibles Shows

FREE PARKING & ENTRY!

OUTDOOR Weekly Shows (2025):
 Oakcrest Cove
 #34 Quaker Meeting House Rd.
 Sandwich, MA
 Wednesdays 6am - 12pm Apr. 2 ~ Oct. 29
 Sundays 7am - 12pm Apr. 27 ~ Oct. 26

INDOOR Monthly Shows (2025):
 The American Legion Hall
 #20 Rt. 130 · Sandwich, MA
 Saturdays 8am - 12pm
 Jan. 18, Feb. 15, Mar. 8

TheSandwichBazaar.com for more info call Lisa 508.685.2767

Beautiful Antiques Unusual Collectibles

Featuring over 80 dealers
 11,000 square feet
 on 2 floors
 Open 7 Days 10am-5pm


STURBRIDGE ANTIQUE S·H·O·P·S

Open until 8pm during Brimfield Shows
 Only 8 miles from Brimfield

Visit the most active group shop in Central New England and browse our extensive selection of quality, affordable antiques.

• Porcelain • Silver • Glass • Ephemera • Furniture • Art
 • Textiles • Tools • Primitives • Toys • Metals • Books • Postcards • Sporting • Clothing • Jewelry & much more!

128 Charlton Rd., (Rt. 20) Sturbridge, MA 01566
 508-347-2744 (Next door to Wal-Mart Plaza) www.SturbridgeAntiqueShops.com




THE STRETCH GLASS SOCIETY

CELEBRATING **51** YEARS

See what you are missing!

www.stretchglassociety.org



HARDWICK VINEYARD & WINERY

VISIT US
at Hertan's Field
 for wine, slushees, & sangria!
 WINERY OPEN 7 DAYS A WEEK.
 3305 Greenwich Road, Hardwick, MA



STORMVILLE AIRPORT 

ANTIQUE SHOW & FLEA MARKET

Apr 26 & 27	July 5	Oct 11 & 12
May 24 & 25	Aug 30 & 31	Nov 1

8AM TO 4PM • RAIN OR SHINE • OVER 400 EXHIBITORS
Exhibitor Space Available, 845-221-6561

Celebrating 55 Years! **Free Admission & Parking • No Pets**
 428 Rt. 216, Stormville, NY
STORMVILLEAIRPORTFLEAMARKETS.COM

Lots of New Additions, Fresh-to-Market!

ANTIQUE AT WINTERGARDEN FARM

(413) 539-1472
 359 Stafford Rd., (Rt. 32), near the CT State Line, Monson, Mass.

MAY 7 - 12
JULY 2 - 7
AUG. 25 - SEPT. 1

Open Daily 9am-5pm

Open by appointment most anytime!

ANTIQUESATWINTERGARDENFARM.COM

Wednesday, Saturday & Sunday 6AM to 4PM

GOLDEN NUGGET
Flea Market SINCE 1967
Lambertville, NJ

Visiting Brimfield?

We're a great stop along the way.

Sellers: Hassle-Free Reservation System
 Buyers: 300 Outdoor Tables + 50 Indoor Shops

Visit the many Lambertville-New Hope area antique shops and art galleries. Need a hotel to stay, ask us!

www.gnflea.com | info@gnflea.com | (609) 397-0811 | New Restrooms

THE STURBRIDGE SHOW
2025 MONDAYS
MAY 12 • JULY 7 • SEPT 1

EARLY BIRD ADMISSION
 8 AM - 10 AM • \$50

GENERAL ADMISSION
 10 AM - 5 PM • \$20

STURBRIDGE HOST HOTEL • Route 20, Sturbridge, MA
 (jct. 90 Mass Pike & I-84 • GPS Address - 366 Main Street
www.TheSturbridgeShow.com • TheSturbridgeShow@gmail.com



100 BOOTHS
 AMERICANA, ANTIQUE
 FABRIC, ANTIQUE &
 VINTAGE CLOTHING &
 ACCESSORIES, LINENS,
 LACE, QUILTS, ANTIQUE
 TEXTILES & MORE



ANTIQUES on 12

 271-277 West Boylston Street
 West Boylston, MA
 774-239-8787
 RSTanacea@yahoo.com

Two new in-town
 antique shops filled
 with traditional
 antiques, vintage
 goods & collectibles.

*Open: Mon.-Sat. 11am-5pm,
 Sun. 12pm-5pm*



The Original
BRIMFIELD
AUCTION ACRES
— FORMERLY J&J PROMOTIONS —



BIRTHPLACE OF THE
Brimfield Rush

2025 SHOW DATES (FRI & SAT ONLY)

MAY 16 + 17	JULY 11 + 12	SEPT. 5 + 6
------------------------------	-------------------------------	------------------------------

OPEN FRI 8-4 \$5 ADMISSION
SAT 9-3 FREE ADMISSION
brimfieldauctionacres.com
35 Main St. Brimfield, MA 01010





While you're here visit
BRIMFIELD WINERY & BREWERY
OPEN ALL WEEK
DURING ANTIQUE SHOW
visit **BRIMFIELDWINERY.COM**
Look for the big red barn at
35 MAIN ST.
BRIMFIELD, MA



2025
July 26-27
Sept 20-21
May 1-2



THE
DC BIG FLEA
ANTIQUES EVENT

Antiques
Jewelry
Vintage
Art
Repurposed
and more

PHONE: (757) 430-4735



THE DULLES
EXPO CENTER
DULLES EXPO CENTER
4320 CHANTILLY
SHOPPING CENTER
CHANTILLY, VA 20151
SAT. 9-6 SUN. 11-5
ADMISSION \$10 FOR BOTH DAYS

2
0
2
5

MAY

3-4






May's Antique Market

'The Early Buyers Show'

Brimfield Dates 2025

May 15, 16, 17

July 10, 11, 12 • Sept 4, 5, 6

Admission Opening Day Only - Opens 9am

www.maysbrimfield.com

413-245-9271



ANTIQUE ADVERTISING ASSOCIATION OF AMERICA

2025 AAAA CONVENTION

July 16-19, 2025

Embassy Suites Dublin/Columbus, Ohio

Sponsored by the Antique Advertising Association of America & The Ice Creamers

Speakers include: William Carlisle, recognized expert on Advertising Art of Coshocton and John DeVolder, authority on Rochester Lithography.

Free Public Show & Sale!
Friday, July 18, 2025

- Free admission to the general public on Friday, July 18th
- Thousands of vintage advertising items for sale
- Show & Sale: 10:00 AM-6:00 PM

To register go to: <https://aaaa.regfox.com/2025-annual-aaaa-convention>

jcdvette@yahoo.com • 585-697-4047 • WWW.PASTIMES.ORG



Join us for

Sturbridge Herbfest

Saturday, October 4th, 2025

Classes • Vendors

9:30 a.m. - 4:30 p.m.
Sturbridge Common
Rt 131, Sturbridge, MA 01566

Rain or Shine
Pre-registration \$15
At the Door \$25
Includes all classes

(508) 347-2111
sargreene@gmail.com

PRE-REGISTER AT
www.sturbridgeherbfest.com



For more information, reservations
and vendor applications
please contact Salli Greene
at Alternatives for Health

Sponsored by



BARN STAR PRODUCTIONS
SPRING ANTIQUES AT
RHINEBECK

MAY 24-25, 2025 | MEMORIAL DAY WEEKEND

SATURDAY: 10AM-5PM & SUNDAY: 11AM-4PM

125 EXHIBITORS ALL INDOORS

DUTCHESS COUNTY FAIRGROUNDS
6550 Spring Brook Ave. (Route 9)
Rhinebeck, NY 12572

Free Parking and Shuttle • Food Concession
Handicap Friendly - Sorry, No Pets



TICKETS:

GENERAL ADMISSION: \$15
Good for the entire weekend!

[antiquesatrhinebeck](https://www.facebook.com/antiquesatrhinebeck)
914-474-8552

www.barnstar.com
Visit our Website for Tickets
& More Information



Alternatives For Health
HERBAL  **APOTHECARY**

Nature's solution for better health

Bulk Herb & Teas • Flower Essences
Essential Oils • Herbal Remedies
Homeopathics

Classes & Events • Body Work • Ear Coning

426 Main Street • Sturbridge, MA

508-347-2111

Hours: Mon, Wed, Thurs, Fri, Sat, 10-4
Sun 12-4 • Closed Tues

www.alternatives-4health.com

BREAKFAST


Annie's Country Kitchen

AND LUNCH

Visit us @ anniescountrykitchen.com

Sat./Sun. 7 am – 12 pm (Breakfast only)
Mon. to Fri. 7 am – 2 pm

508.347.2320 • 140 Main St., Sturbridge, MA 01566



March 2025 Vol. 28 No. 6

Your Hometown Shopper

Your Source for All Things Local in Print & Online • yourlocalhometownshopper.com

ORCHARD HILL

621.689

Soper 64

Septic System Specialists • Water & Sewer Tile-ins
Tile 5 Septic Inspections • Excavation • Foundation
Land Clearing & Site Development
Residential & Commercial Services
New Home Construction
Accessory Dwelling Unit Tiny House Specialist

www.hiresoper.com 765-9003

March 2025 Vol. 28 No. 6

Your Hometown Shopper

Your Source for All Things Local in Print & Online • yourlocalhometownshopper.com

**LOOK FOR US
AROUND TOWN
OR ONLINE AT**

YOURLOCALHOMETOWNSHOPPER.COM

Sadie Green's Emporium

Rare and unusual books
Vintage & collectible records of all genres

**Junque,
Jewelry, & Gems**

Wholesale & Retail



- Vintage clothing & jewelry
- Sterling jewelry
- Antique glass beads & stones
- Vintage findings
- Semi precious beads

- Antiques & Collectibles; old, new, & gently used clothing
- Displays for your business including velvets for jewelry

OPEN DAILY 11AM - 5PM
during **Brimfield Flea Market**
or by chance or appointment

Laurie Boniface, Owner
508-208-6157

320 Main St. - Rt. 131 • Sturbridge, MA • 508-347-1449 • www.sadiegreens.com



WELLSWORTH HOTEL

SOUTHBRIDGE, MA

BOOK YOUR NEXT BRIMFIELD STAY WITH US!

14 Mechanic Street • Southbridge, MA 01550
508-765-8000 • WellsworthHotel.com





TripAdvisor Travelers' Choice Award Winner





All rooms and suites feature refrigerators, coffeemakers, high-definition TVs, premium bath amenities, & complimentary high-speed Wi-Fi.

Shelton Antique Shows Celebrates 50 Years



BRIMFIELD, MA – Shelton Antique Shows of Brimfield is celebrating its 50th year in business.

In 1975, after some years of parking overflow cars for attendees of the only show on the Brimfield strip—Gordon

Reid's Auction Acres—a vendor stopped by and asked if he could set up on the Shelton's property. "I guess so," they said, and settled on a nominal fee for three days. However, within a few hours it started to rain and he wanted his money back. "There is no refund due to inclement weather" was thereafter put on all vendor agreements.

Shelton's quickly developed into the first "spin-off" market as buyers and sellers continued to flock

to Brimfield to go antiquing, with Shelton's becoming a quality showfield in their own right, welcoming patrons for shopping (and parking).

Wonderful friendships have been built over the decades with many dealers becoming regulars on this showfield for 40+ years, bringing their pets and families and forming a friendly community of antiquers. Join Shelton's friendly owner and staff members as they celebrate this milestone all year long. Congratulations, Shelton's!

2025 BRIMFIELD Celebrating 50 years!

SHELTON ANTIQUE SHOWS

DAYBREAK TUESDAY

MAY 13-18

JULY 8-13 • SEPTEMBER 2-7

Free Admission • Pet Friendly • Showers
• 6 DAYS OF ACTION!!

Lois J. Shelton, PO Box 124, Brimfield, MA 01010
(413) 245-3591 • Since 1975

sheltons@prodigy.net • www.brimfieldsheltonshows.com

Pick your own

Strawberries - June

Blueberries - July

Peaches - Aug.

Apples - Sept. & Oct.

Pumpkins - Oct.

• Our own Apple Cider

• Cider Donuts

• Pies & breads

• Preserves



Like us on



108 Crystal Pond Road

Eastford, CT

860-974-1150

Check our website

for events

www.buellsorchard.com

your **HEALTH** matters

Nourish
Healthier,
Live Happier

Supplements, Body Care, Natural Foods & More!

Fiskdale Plaza • 71 Main Street

(Route 131) Sturbridge, MA

508-909-6966

Tuesday-Friday 10am-6pm • Saturday 10am-5pm

HELPING YOU TAKE CONTROL OF YOUR HEALTH.

20% OFF

Exp 05.31.25

the regular price of any
ONE item store wide!
10% off if already on sale.



1628 Park Street

Palmer, MA

(On Route 20)

Spaces: Kris 978-761-8136

Jack 978-265-6696

*The Official Pre-Brimfield
Show for 45 Years!*

2025 SHOW DATES

MAY 8th-12th • JULY 3rd-7th • AUG 28th-SEPT 1st

Open 7AM - 4PM Daily Rain or Shine

Electricity throughout field - \$25 weekly rate

Handicap Access Restroom • \$5 Parking and always FREE Admission

10 x 20 Enclosed Tent and Table Rentals



THE PSYCHOLOGY OF COLLECTING

BY SHIRLEY M. MUELLER, M.D.

A Human Brain Turned to Glass

As a collector, I am always looking for the next best thing. The thought of it delights my brain even more than having it. That anticipation nourishes me, sparks me, and invigorates me. Now, I've discovered a piece any collector would be proud to add to her collection – a human brain that is crystallized into glass. Here's the story.

In 79 CE, Mount Vesuvius threw what can best be described as nature's ultimate temper tantrum. When it finished spewing ash and volcanic fury over Pompeii and Herculaneum, it had tragically—and efficiently—destroyed two bustling Roman cities. Amid the chaotic horror, one poor soul in Herculaneum met a uniquely bizarre fate – his brain turned to a vitreous mass.

Picture this: a young man lounging on his wooden bed, possibly dreaming of lunch, suddenly confronted by a blistering pyroclastic flow barreling through town at 510°C or 950°F. With no time to react, not even for a last gasp, the fluids in his body vaporized instantly. His brain literally boiled in his skull. But here's where it gets truly peculiar: that brain tissue didn't just vanish into oblivion; it turned into glass.

This oddity was detailed by Giordano et. al. (2025) in *Scientific Reports*, making researchers sit straight in their lab chairs. Inside this unfortunate man's skull were obsidian-like shards of vitrified brain tissue, neurons, and axons still visible in stunning, if gruesome, detail. Advanced imaging like Field Emission Scanning Electron Microscopy showcased structures that should have been obliterated but instead were preserved as microscopic curiosities.

Why does brain matter turn into glass instead of just incinerating into oblivion? The answer lies in the extreme conditions – a lightning-fast bake-and-freeze scenario almost impossible to replicate even in the most daring lab experiments. The rapid heating vaporized brain fluids, and the immediate cooling trapped the liquefied remnants into glass.

In nature, glass formation is rare. Ordinary window glass is made from silica sand that is melted at a high temperature and cooled quickly. Organic materials (like a brain) are much harder to vitrify because they contain lots of water and

will decompose or burn under intense heat. For an organic substance to form glass, it must be heated well above its boiling point and quenched so fast that even water vapor and organics solidify amorphously. The tissue must solidify at a higher temperature than the surrounding environment.

Knowing this process is essential to the intellect of a glass collector who studies glass techniques and craftsmanship. Glassblowing, mold-making, engraving, cutting, and coloring glass involve meticulous skills that collectors deeply admire. Knowledgeable collectors often dedicate considerable time researching artists, production methods, and the science behind glassmaking. Understanding annealing processes, color chemistry, and tool evolution enhances appreciation and deepens the sense of participation in preserving knowledge and tradition. But a glass brain! It goes below all this to the sublime.

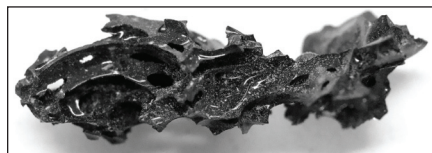
This unprecedented find has profound implications across various fields. For volcanologists, it demonstrates the terrifyingly fast temperature swings within pyroclastic flows. For forensic scientists and archaeologists, it offers a rare window

into studying neural preservation under extreme conditions.

And for the rest of us? It's a fascinating reminder that beneath history's dramatic eruptions lies a delicate human vulnerability. This discovery combines the macabre, the scientific, and the strangely mesmerizing –

highlighting humanity's frailty when confronted by Earth's explosive wrath.

As a collector, I chase the extraordinary – rare and unique artifacts that tell profound stories through their very existence. This brain turned to glass embodies the ultimate intersection of rarity, science, and human history. It reminds me why I collect in the first place: to grasp, if only momentarily, the elusive wonders of nature and the fragility of life itself.



Archaeologists excavated Herculaneum's Collegium Augustalium (a Roman religious building) in the 1960s and found a carbonized skeleton lying on a wooden bed. The victim, a man in his early 20s, was believed to be the building's guard or caretaker. He died suddenly in the eruption's first moments. This young man's remains were peculiar from the start. His bones were charred and brittle from extreme heat yet still articulated in the bed where he perished. Inside his skull, archaeologists noticed a hardened, shiny black material amid the ash.



Shirley M. Mueller, M.D., is known for her expertise in Chinese export porcelain and neuroscience. Her unique knowledge in these two areas motivated her to explore the neuropsychological aspects of collecting, both to help herself and others as well. This guided her to write her landmark book, Inside the Head of a Collector: Neuropsychological Forces at Play. In it, she uses the new field of neuropsychology to explain the often-enigmatic behavior of collectors. Shirley is also a well-known speaker. She has shared her insights in London, Paris, Shanghai, and other major cities worldwide as well as across the United States. In these lectures, she blends art and science to unravel the mysteries of the collector's mind.



All Dressed Up

Militaria is a very popular category for collectors. One of the most interesting types of militaria to collect is uniform buttons. Let's take a peek at their history and the popular ones to collect.

The Allure of Military Button Collecting

Military uniform buttons are miniature works of art and historical documents. Each button, with its distinctive design, material, and markings, provides insights into the evolution of military fashion, technological advancements, and the changing face of warfare. Collectors are drawn to these buttons for their historical significance, artistic merit, and researching and authenticating rare specimens.

A Brief History of U.S. Military Buttons

The history of U.S. military buttons dates back to the country's founding. Early buttons were often imported from Europe, but as the nation grew, domestic production started. The 19th century saw the rapid expansion of various designs, with each branch of service and individual units often having their own unique buttons."

Materials and Manufacturing

Early military buttons were typically made of brass, gilt, or silver-plated metals. As technology advanced, new materials were introduced, including white metal, horn, and eventually plastic. The manufacturing process evolved from hand-crafted pieces to mass-produced items, with companies like Waterbury Button Company becoming prominent suppliers.

Identifying Antique Military Buttons

Key factors include specific symbols and designs, materials, size, and shape. Backmarks, which are manufacturer stamps, can also be good indicators. Some buttons can also be dated based on how they are attached. Loops, holes, and shanks were used at various points in history.

The Most Sought-After Military Buttons: U.S. Army

While all branches of the U.S. military have produced collectible buttons, those from the U.S. Army are often considered the most sought-after among collectors. This preference stems from the Army's long and varied history, which has resulted in a diverse array of button designs spanning multiple conflicts and eras.

• Civil War Era Army Buttons

Civil War-era Army buttons are particularly prized by

collectors due to their historical significance and relative scarcity. These buttons can feature intricate designs that reflect the unit or state of the soldiers who wore them.



• Artillery Officer Buttons

Among the most desirable are artillery officer buttons from the 1860s. These typically feature an eagle with an "A" in the shield on its breast, symbolizing the artillery branch. The backmarks of these buttons, such as those from Horstmann of Philadelphia, can provide valuable information about their origin and age.

• Post-Civil War to World War I

Following the Civil War, the U.S. Army underwent significant changes, reflected in its uniform buttons. The period from 1880 to 1902 saw distinctive designs for different branches. Eagles were featured often on general service buttons. Branch-specific buttons existed for cavalry, artillery, and infantry. Meanwhile, staff officer buttons had more intricate designs.

• World War I and II Buttons

Buttons from the World Wars represent a significant shift in design and manufacturing. The General Service Eagle button, introduced in 1902, became standard issue and remained in use with minor modifications through World War II. These buttons, while more common, are still sought after by collectors.

Factors Affecting Value and Collectability

Several factors influence the value and desirability of antique U.S. Army buttons. Rarity is perhaps the most prominent. Many buttons from specific units were very limited in terms of production and are thus more difficult to find now.

The next most significant factor is often historical significance. Buttons worn during famous battles or by notable figures tend to be more desirable and more expensive. Buttons from specific conflicts, especially the Civil War, are also quite interesting to collectors.

Beyond that, complete sets of buttons from a certain era or uniform type are popular, but as with nearly any other collectible one can think of, the condition often impacts value.

Finally, authenticity is a major issue. Many buttons have been reproduced over the years. Obviously, originals are worth more than those reproductions.

Jessica Kosinski has been a freelance researcher and writer since 2001. She developed a passion for pre-1990s television and films as a child and she has never grown out of it. Recently, she turned that passion into a retro TV and film blog. Follow along with her at https://medium.com/@jkos_writing, as she dives deep into the characters, actors, quirks, and trivia that brought us some of the greatest films and shows in TV history and also discusses some of the more obscure films and shows most of us may have forgotten.

Alvin Rondeau's Dairy Bar

Serving Homemade Ice Cream Since 1940!

56 Flavors

5 No Sugar Added

5 Sorbet

Cheeseburgers • Hotdogs

Grinders • French Fries

Always Fresh Seafood!



(413) 284-0068

**Route 32 North /
Ware Road, Palmer, MA
01069**

circa 1940
3 miles off
Exit 63
Mass Pike

ST. ANNE SHRINE & GIFT SHOP

Open 10am – 5 pm Seven Days a Week!

16 Church St., Sturbridge, MA

508-347-7461



Cabot Mill Antiques

Visit our 16,000 Sq. Ft. Showroom Featuring
160 High Quality Authentic Antique Displays
with New Stock Arriving Daily

Open 7 Days a Week!

**VOTED BEST OF
MIDCOAST MAINE**



**Open Daily
10am-5pm**

207-725-2855

Located Inside Historic Fort Andross
a Restored 1820's Mill on the Androscoggin
14 MAINE STREET • BRUNSWICK 04011
www.cabotiques.com
e-mail: cabot@waterfrontme.com

Cash, Check, are all accepted

Air Conditioned

Ample Parking

QUALITY ANTIQUES
New Merchandise Arriving Daily!

**VOTED BEST OF
MID-MAINE**

- 10,000 Sq. Ft. Multi Dealer Emporium
- Quality Antiques
- Well Lit, Clean and Organized
- Featuring Authentic Antiques to Quality Mid-Century Modern
- Discover the Gem that is Hathaway Mill Antiques, sister shop to Cabot Mill Antiques!!

**HATHAWAY MILL
ANTIQUES**



Hathaway Mill Antiques
Open Wed.-Sun. 10am-5pm
Closed Mon. & Tues.
10 Water St., Waterville, ME
207-877-0250

Like us on Facebook
Follow us on Instagram!
www.hathawaymillantiques.com
email: info@hathawaymillantiques.com



In and Around the Brimfield Region

ONLINE SHOPS

Ruby Lane

Vintage Begins Here
Website: www.rubylane.com

CONNECTICUT

Coventry Arts and Antiques

1140 Main Street, **Coventry**, CT
Phone: 860-208-8215
Email: annecburke@msn.com
Website: www.coventryartsandantiques.com
Open Saturday-Sunday, 11am-4pm
Closed Monday through Friday

Nathan Hale Antique Center

1141 Main Street, Rte 31, **Coventry**, CT
Phone: 860-498-7400 or 860-230-4214
Website: www.nathanhaleantiquecenter.com
Email: jr.haddad@outlook.com
Open Wednesday-Friday 11am-4pm,
Saturday & Sunday 10am-5pm

The Barn

45 North Main Street, **Marlborough**, CT
(located in the old Marlborough Barn)
Phone: 860-295-1114
Website: www.shopsatmarlboroughbarn.com
Open Tues, Wed, Thur, Fri 11am-5pm,
Sat 10am-5pm, Sun. 10am-4pm, Closed Mon.

Antiques Marketplace

109 Main Street, **Putnam**, CT
Phone: 860-928-0442
Email: rickscoolstuff@hotmail.com
www.facebook.com/AntiquesMarketplace
Open Wed-Mon 10am-5pm, Closed Tuesdays

Stratford Antique Center

400 Honeyspot Road, **Stratford**, CT
Phone: 203-378-7754, Fax: 203-380-2086
Website: www.stratfordantique.com
Email: stratfordantique@aol.com
Open daily 10am-5pm

MAINE

Orphan Annie's Antiques

96 Court Street (Across from the courthouse),
Auburn, ME
Phone: 207-782-0638
Website: www.orphananniesme.net
Email: orantiques@myfairpoint.net
Open: Daily 10am-5pm, Sunday 12-5pm
Warehouse Sale every Monday 10am-1pm

Stoney Creek Antiques

881 Civic Center Drive, **Augusta**, ME
Rt 27, 3 miles N of I-95 Exit 112
Phone: 207-626-9330
www.facebook.com/stoney.creek.antiques
Open Year round. Tuesday - Saturday 10am-5pm

Cabot Mill Antiques

14 Maine Street, **Brunswick**, ME
Phone: 207-725-2855
Email: cabot@waterfrontme.com
Website: www.cabotiques.com
Open: Daily 10am-5pm

MICHAAN'S AUCTIONS PRESENTS ALAMEDA POINT ANTIQUES FAIRE

- Over 800 Booths
- 3900 Main St. in Alameda CA
- 1st Sunday of Every Month

California's Largest Antique Show!



AlamedaPointAntiquesFaire.com

California's Premier Vintage Event!



VintageFashionFaire.com

Alameda

VINTAGE FASHION FAIRE

—EST. 2010—

- Over 65 Booths
- Alameda County Fairgrounds in Pleasanton, CA
- Spring & Fall 2025 dates:
Sat & Sun 5/17 & 5/18
Sat & Sun 10/25 & 10/26



Hathaway Mill Antiques

10 Water Street, **Waterville, ME**
 Phone: 207-877-0250
 Email: info@hathawaymillantiques.com
 Website: www.hathawaymillantiques.com
 Open: Wednesday-Sunday 10am-5pm,
 Closed Monday & Tuesday

Bo-Mar Hall Antiques & Collectibles

1622 Post Road, **Wells, ME**
 Phone: 207-360-0943
 Email: bonhep@hotmail.com
 Like Us on Facebook: www.facebook.com/Bo-Mar-Hall-Antiques-Collectibles
 Open daily, year-round, 10am-5pm

MASSACHUSETTS**Great Road Vintage**

469 Great Road, **Acton, MA**
 Phone: 978-429-8322
 Email: greatroadvintage@gmail.com
 Website: www.greatroadvintage.com
 Facebook: www.facebook.com/greatroadvintage
 Open: Wednesday-Saturday 11am-5pm,
 Sun. Noon-5pm, CLOSED Monday & Tuesday

The MEWS at Brewster Antiques

2926 Rte. 6A (diag. across from Ocean Edge)
Brewster, MA
 Phone: 508-896-4887, 508-776-9098
 Email: bheapg7@comcast.net
 Website: www.the-mews-at-brewster-antiques.com
 See website for seasonal hours

New England Brass Refinishing & Campello Antiques

1085 Main Street, **Brockton, MA**
 Phone: 508-583-9415
 Website: www.campelloantiques.com
 Email: brassmanbethoney@aol.com
 Please call for an appointment available
 7 days a week

North Bridge Antiques

28 Walden Street, **Concord, MA**
 Phone: 978-371-1442
 Website: www.northbridgeantiques.com
 Open Monday-Saturday 10am-5pm,
 Sunday Noon-5pm

The Berkshire Galleries of Great Barrington

964 S. Main Street, **Great Barrington, MA**
 Phone: 413-644-8848
 Website: www.theberkshiregalleries.com
 Open 7 days a week 10am-5pm
 (check website for winter hours)

Windsong Antiques

346 Route 28 at 29/124,
Harwich Port, MA
 Phone: 508-432-1797
 Email: sandyhall1@comcast.net
 Website: www.windsongantiques.com
 Open: Daily 11am-5pm, Sundays 12-4pm
 Winter hours may vary. Please call ahead.

Canal Street Antique Mall & Design Center

181 Canal Street, **Lawrence, MA**
 Phone: 978-685-1441 and 978-965-5903
 Website: www.canalstreetantique.com
 Email: canalstreetantiquemall181@gmail.com
 Open: Daily 10am-5pm, Thurs til 7pm.

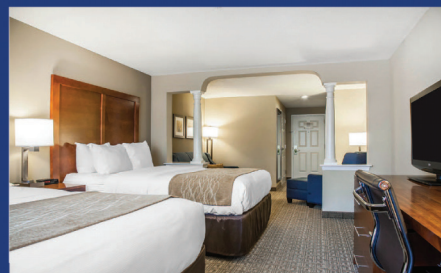
The Uptown Store

266 Main Street, **Lee, MA**
 Phone: 413-358-0170
 Email: info@theuptownstore.org
 Website: www.theuptownstore.org
 Open Mon., Wed., Thurs. Fri 10am-4pm,
 Sat. 10am-5pm, Sun. 11am-4pm

Visit our full Antiques Shop Finder page at www.journalofantiques.com

**Comfort Inn & Suites, Sturbridge, MA**

www.sturbridgecomfortinn.com (508) 347-3306
 83 Hall Road (behind Cracker Barrel) Sturbridge, MA 01566
Easy access to both I-84 and I-90 (Mass Pike)



Friendly Award-Winning Staff, Complimentary Hot Breakfast, Indoor Pool & Outdoor Seasonal Pool, Fitness Room, Cocktail Bar & Lounge.
 Visit us at www.sturbridgecomfortinn.com to learn more.

Lounge rental available for private events;
 email sales@sturbridgecomfortinn.com to
 learn more about our group
 accommodations and/or lounge rental.

Upton House Antiques

275 King Street (Rte. 2A-110), **Littleton, MA**
 Phone: 978-486-3367
 Website: www.uptonhouseantiques.com
 Open: Wed., Thurs., Fri., & Sat. 10am-4pm
A call ahead is advised.

Acushnet River Antiques

50 Kilburn Street, **New Bedford, MA**
 Phone: 508-992-8878
 Email: ariverant@aol.com
 Website: www.acushnetriverantiquesllc.com
 Open Mon.-Sat. 10am-5pm, Sun. 11am-4pm

Antique Junction

1294 S. Main Street, **Palmer, MA**
 Phone: 413-531-1936
 Open: Wed-Sun 10am-4pm
 (Mon & Tue - Call for appt.)
 Open daily before and during Brimfield Antique Shows for extended hours.

Palmer Antiques Co-Op

1239 So Main Street, **Palmer, MA**
 Phone: 413-283-3373
 Email: palmerantiquescoop@comcast.net
 Website: www.facebook.com/PalmerAntique
 Open Thursday-Saturday, 9am-5pm,
 Sunday 10am-4pm

Nu-Tiques at the Barn

486 West Street (Route 31), **Paxton, MA**
 Phone: 508-754-2340
 Website: www.nu-tiques.com
 Open: Weekends April - December 10am-4pm

Circus Lane

10 Jefferson Avenue, **Salem, MA** 01970
 Phone: 978-744-1100
 Email: circuslanesalem@gmail.com
 Website: www.circuslane-salem.com
 Open: Thurs.-Mon. 11am-5pm, Sun. 10am-4pm
 Closed Tuesdays & Wednesdays

Heaven on Earth Antiques

20 N. Main Street, **Sherborn, MA**
 Phone: 508-314-1593
 Email: heaveniques@yahoo.com
 Website: www.heavenonearthdesigns.com
 Open Wed-Sun 11am-5pm
 Call or email for private shopping!

Live More Hunt Less Consignment

149 Main Street, **Stoneham, MA**
 Phone: 781-435-2366
 Email: Livemorehuntlessconsignment@gmail.com
 Open Mon-Sat: 10am-6pm, Sunday: 11am-5pm

Sturbridge Antique Shops

128 Charlton Road (Rt. 20), **Sturbridge, MA**
 Next to Walmart Plaza
 Phone: 508-347-2744
 Website: www.sturbridgeantiquesshops.com
 Open daily 10am-5pm

**Vintage and Antique Textiles**

538 Main Street, **Sturbridge, MA**
 Phone: 508-347-2229
 Website: www.vintageandantiquetextiles.com
 Email: barbarawright535@charter.net
 Open Saturday and Sunday 10am-5pm,
 weekdays by chance or appointment
 Extended Brimfield hours

**Bay View Arts LLC**

402 Humphrey St., **Swampscott, MA**
 (Across from the entrance to Fishermen's Beach)
 Store Phone: 781-592-1033
 Alice Cell: 978-754-5112
 Email: pandmpaintings22@gmail.com
 Open Wednesday-Saturday 12pm-4pm,
 Sunday 12-3pm or by appointment

Bernat Antiques

89 Elmdale Rd., **Uxbridge, MA**
 Phone: 508-278-5525
 Email: ccorinna30@gmail.com
 Website: www.facebook.com/bernatan antique
 Open Tuesday-Sunday 10am-5pm;
 Fridays til 7pm

Stanley Mill Antiques

146 Mendon Street, **Uxbridge, MA**
 Phone: 508-779-0334
 Email: stanleymillantiques@gmail.com
 Open: Wednesday - Sunday 10am-5pm



COLLECTOR CARS



MS # 1099

MAY 30 & 31

MS COAST COL. & CONV. CENTER
2350 BEACH BLVD. BILOXI, MS

REGISTER YOUR VEHICLE, AUTOMOBILIA OR TO BID








504.264.CARS (2277) | WWW.VICARIAUCTION.COM

Can't make the auction? BID ONLINE!

ANTIQUES on 12

271 West Boylston Street,
West Boylston, MA 01583
Phone: 774-239-8787
Email: RSTanacea@yahoo.com
Find Us on Facebook @ Antiques on 12
Open: Mon.-Sat. 11am-5pm, Sun. 12pm-5pm

ANTIQUES on 12

277 West Boylston Street,
West Boylston, MA 01583
Phone: 774-239-8787
Email: RSTanacea@yahoo.com
Find Us on Facebook @ Antiques on 12
Open: Mon.-Sat. 11am-5pm, Sun. 12pm-5pm

Wayside Antiques & Collectibles

1 Prospect Street, **West Boylston, MA**
Near the Old Stone Church
Phone: 508-835-4690 during business hours only
Website: www.facebook.com/Wayside-Antiques-Collectibles
Open: Monday-Saturday 11am-5pm,
Sunday: Noon-5pm

Quaboag Book Shop

80 West Main Street
West Brookfield, MA
Website: www.facebook.com/bookreadersfind
Open Wednesday-Sunday 10am-6pm.

NEW HAMPSHIRE**Concord Antiques Gallery**

137 Storrs Street, **Concord, NH**
Phone: 603-225-6100
Email: cag@concordantiquesgallery.com
Website: www.concordantiquesgallery.com
Open 7 Days a Week 10am-5pm

Sage Farm Antiques

5 Exeter Road, **N. Hampton, NH**
Phone: 603-964-3690
Email: info@sagefarmantiques.com
Website: www.sagefarmantiques.com
Open first Friday of the month: April, May, July, August, October, November (First & Third Fridays), December Closed January-March. See website for upcoming show dates and hours.

Route 1 Antiques

106 Lafayette Rd, **Hampton Falls, NH**
Phone: 603-601-2554
Website: www.route1antiques.com
Open daily, 10am-5pm

Antiques on Elm

321 Elm Street, Manchester, NH
Phone: 603-606-1736
Email: antiquesonelm@comcast.net
Website: www.antiquesonelmmanchester.com
Open 7 days a week: Mon.-Sat. 10am-6pm;
Sun. 10am-5pm

The Collector's Eye

132 Portsmouth Avenue, **Stratham, NH**
Phone: 603-772-6205
Email: info@collectorseye.com
Website: www.collectorseye.com
Open Mon., Wed., Thurs., Fri., Sat., Sun., 10am-5pm. Closed Tuesdays

Flying Pig Antiques

867 Hwy 12, **Westmoreland, NH**
Phone: 603-543-7490
Email: flyingpigantiquesnh@gmail.com
Website: www.flyingpigantiquesnh.com
Open Daily, 10am-5pm

RHODE ISLAND**Antiques at the Drawing Room of Newport**

152 Spring Street, **Newport, RI**
Phone: 401-841-5060
Email: drawrm@hotmail.com
Website: www.drawrm.com
Open Daily, 10am-5pm

Rhode Island Antiques Mall

345 Fountain Street, **Pawtucket, RI**
Phone: 401-475-3400
Email: info@riantiquesmall.com
Website: www.RIAntiquesMall.com
Open Mon.-Wed. 10am-5pm,
Thurs. 10am-7pm, Fri-Sat 10am-5pm,
Sun. 11am-5pm
Open every day except 4th of July,
Thanksgiving, and Christmas Day

*Come Rescue a Piece
of American History!*



Michigan's Largest Antique & Vintage Market

Michigan's Largest Treasure Hunt!

Home Decor & Eclectic Furniture • Architectural Salvage • Jewelry • Primitives
Shabby Chic & Industrial • Painting Demos Free Appraisals • Interior Design Ideas
Classic Car Show • Country Setting • Food • Music & More!



Davisburg, MI
May 3 & 4
Oct. 11 & 12

Springfield Oaks County Park
12451 Andersonville Rd.
Davisburg, MI 48350

Midland
May 31 & June 1
Sept. 27 & 28

Midland County Fairgrounds
6905 Eastman Ave
Midland, MI 48642

Visit MiAntiqueFestival.com for more information
[Facebook.com/AntiqueFestival](https://www.facebook.com/AntiqueFestival) • 989-687-9001



Admission \$10 per Person
Sat. 8-6, Sun. 9-4
Early Bird Fri. 10-5
\$20 Weekend Pass

ANTIQUES SHOP FINDER In and Around the Brimfield Region *(continued)*

Nostalgia Antiques & Collectibles

236 Wickenden Street, **Providence, RI**
 Phone: 401-400-5810
 Email: nostalgiaprov@gmail.com
 Website: www.nostalgia providence.com
 Open Mon.-Thurs. 11am-6pm,
 Fri.-Sun. 11am-5pm

VERMONT

Stone House Antique Center

557 Vt. Route 103 South, **Chester, VT**
 Phone: 802-875-4477
 Website: www.stonehouseantiquescentervt.com
 Open 7 days a week 10am-5pm

5 Corners Antiques

11 Maple Street (Route 117)
Essex Junction, VT
 Phone: 802-878-6167
 Open Mon.-Sat. 10am-5pm, Sun. 11am-4pm

The Vermont Antique Mall

5573 Woodstock Road, **Quechee, VT**
 Exit 1 I-89; 2 miles West U.S. Rte 4
 Phone: 802-281-4147
 Website: www.vermontantiquemall.com
 Open 7 days, 10am-5pm
 Closed Easter, Thanksgiving, Christmas Day &
 New Year's Day.

VIRGINIA

Duke's Antique Center

1495 N Lee Highway (Rt. 11) **Lexington, VA**
 Phone: 540-463-9511
 Email: dukedukeantiques@gmail.com
 Website: www.dukedukeantiques.com
 Open 365 days 9am-6pm

The Factory Antique Mall

50 Lodge Lane, Suite 106, **Verona, VA**
 The largest antique mall in America & growing.
 Now over 135,000 sq. ft.
 Phone: 540-248-1110
 Website: www.factoryantiquemall.com
 Open 7 days Monday-Thursday 10am-5pm
 Friday-Saturday 10am-6pm, Sunday 12-6pm

**To view a full list
 of our Shops,
 please visit our
 Antiques Shop Finder
 page at
 journalofantiques.com**

**Join our popular
 directory!**



**An economical way to
 advertise your shop, mall,
 or antique center in
 The Journal and online!**

**To Join our Shop Finder
 Directory, call
 508-347-1960 or visit
 www.journalofantiques.com**



**Visit 1,700+
 shops online at
 AntiqueTrail.com
 or follow 30 state
 maps right to
 their door!**



**Stop by the
 Brimfield Antique
 Shows Ticket & Info**

**Booth on the corner of Rte 20
 and Mill Lane Rd to pick up an
 AntiqueTrail.com brochure.**

**..... Antique
 TRAIL.com**

ANTIQUETRAILROUTE.COM

View antique & vintage shops along your way!



**Request info & maps at
 256-797-5640 or Info@AntiqueTrail.com**

SHOPS · SHOWS · AUCTIONS · MARKETS · B&Bs · EVENTS · ONLINE STORE

Continuous Shows & Flea Market Guide

January-December: Alameda, CA

Alameda Point Antiques Faire

3900 Main Street

1st Sunday of the Month, 6am-3pm

510-522-7500, www.alamedapointantiquesfaire.com

January-December: Los Angeles, CA

Santa Monica Antique & Vintage Market

1st & 4th Sunday Every Month, 7am-3pm

Santa Monica Airport Interim Open Space,

3233 Donald Douglas Loop S

310-909-9001 Phone or Text

www.santamonicaairportantiquemarket.com

January-December: Jewett City, CT

College Mart Flea Market

Slater Mill Mall, 39 Wedgewood Drive

Sundays 9am-4pm

860-376-3935, www.leoneauctioneers.com

January-December: Lambertville, NJ

Golden Nugget Antique Flea Market

1850 River Road, Route 29

Wed., Sat. & Sun. 6am-4pm, Indoor Shops open 8am,

Open 6am-4pm

609-397-0811, info@gnflea.com, www.gnflea.com

January-December: Wallingford, CT

Redwood Country Flea Market

170 South Turnpike Road

Open Every Friday, Saturday, Sunday

Fri. 6am-1pm, Sat./Sun. 6am-3pm

203-269-3500

www.facebook.com/redwoodcountryfleamarket

January-December: Washington, D.C.

The Flea Market at Eastern Market

7th & C Street SE, Capital Hill

Every Sunday, 10am-5pm

Diverse Markets, 202-215-6993

info@easternmarket.net, www.easternmarket.net

January 5-March 23: Barre, VT

Montpelier Antiques Market

The Canadian Club, 414 E. Montpelier Road (Rt 14)

Sundays, 8am-1pm

Don Willis Antiques, www.montpelierantiquesmarket.com

January 1-April 2: Dover, NH

First Wednesday Antiques Flea Market

Dover Elks Lodge, 282 Durham Road

8am-12noon

Gurley Antique Shows, Rachel Gurley

207-396-4255, rachelgurley@gmail.com

www.gurleyantiqueshow.com

January 18-March 8: Sandwich, MA

Winter Sandwich Flea Market

34 Quaker Meeting House Road

Sundays, 8am-12noon

Lisa, 508-685-2767, www.thesandwichbazaar.com

March-December: Woodbury, CT

Woodbury Antiques and Flea Market

44 Sherman Hill Road (Jct 6 & 64)

Saturdays, 7:30am-2:30pm, weather permitting

203-263-6217, thenewwoodburyfleamarket@gmail.com,

www.woodburyflea.net

March 30-December: Seekonk, MA

Seekonk Flea Market

1710 Fall River Avenue

Every Sunday, 7am-1pm

Linda, 401-263-5737, www.seekonkfleamarket.com

April 2-October 29: Sandwich, MA

Sandwich Weekly Antiques & Collectibles Show

34 Quaker Meeting House Road

Wednesdays, 7am-12noon

Lisa, 508-685-2767, www.thesandwichbazaar.com

April 27-Oct. 26: Puslinch (Guelph), Ontario, Canada

Aberfoyle Market Sundays Only Market

57 Brock Road South

8am-4pm

877-763-1077, www.aberfoyleantiquemarket.com

April 27-October 26: Sandwich, MA

Sandwich Weekly Antiques & Collectibles Show

34 Quaker Meeting House Road

Sundays, 7am-12noon

Lisa, 508-685-2767, www.thesandwichbazaar.com

May 4-October 12: Brookline, NH

Outdoor Spring & Summer Brookline Antique Market

Brookline Event Center, 32 Proctor Hill Road

7am-11am

603-673-4474 brooklineantiquemarket@gmail.com

www.brooklineantiquemarket.com

May 17-October: Woodstock, NY

Mower's Saturday & Sunday Flea Market

Maple Lane

9am-5pm

845-679-6744, woodstockfleamarket@hcc.rr.com

www.mowerssaturdayfleamarket.com

November 2, 2025-March 29, 2026: Brookline, NH

Indoor/Outdoor Fall & Winter Brookline Antique Mkt.

Brookline Event Center, 32 Proctor Hill Road

7am-11am

603-673-4474, brooklineantiquemarket@gmail.com

www.brooklineantiquemarket.com

COLLECTOR CLUBS

Fan Association of North America

Fascinated by hand fans? Join FANA!

- Learn & share with other enthusiasts
- Find us on Facebook: Hand Fan Collector
- Enjoy the benefits of membership
- Join at: fanassociation.org
- Contact: admin@fanassociation.org



Westchester Glass Club

"The object of the Westchester Glass Club shall be to promote the study & appreciation of glass, regardless of type and period, with emphasis on American glass."

westchesterglassclub.com

Regular Zoom & In-Person Meetings.
See website for dates & details.

Jim Russell • 203-207-1525 • Russell9431@sbcglobal.net

American Cut Glass Association



We are a non-profit organization devoted to the study and research of American Brilliant Cut Glass. Please visit our web site at www.cutglass.org. ACGA has a lot to offer you as a member, whether you are a new or long-time collector.

cmcw66@hotmail.com • www.cutglass.org

Haviland
Collectors
International
Foundation

Annual Conference
Archives - Publications
www.havilandcollectors.com

**NORTH JERSEY
DEPRESSION GLASS CLUB**

PROMOTING THE JOY AND PLEASURE OF LEARNING ABOUT AND COLLECTING BEAUTIFUL 20TH CENTURY GLASS, CHINA & POTTERY. SERVING THE GREATER METRO AREA SINCE 1974. MEET EVERY 4TH WEDNESDAY, 7:30 PM, WYCKOFF, NJ PUBLIC LIBRARY. SEPT THRU JUNE. SPRING & FALL GLASS SHOWS.

FIND US @
www.facebook.com/NORTHJERSEYDEPRESSIONGLASSCLUB
- INFO - CRAIG (201) 819-5468 OR WALTER (973) 838-2419

**National Association of
Aladdin Lamp Collectors, Inc.**
www.AladdinCollectors.org

Our goal is to kindle your interest in Aladdin lamps and antique home lighting, provide educational information, encourage individuals and organizations to share information, and provide a marketplace to buy and sell antique and collectible lamps.

**International Perfume
Bottle Association**

Annual Directory, Convention,
Lending Library,
E-News, Community Web Site

www.perfumbottles.org Teri: 407-973-0783

**List your club or
association here
for only \$99 per year!**

The Stretch Glass Society

Be the first to know about Stretch Glass discoveries, prices, auctions & events. \$18 annual membership includes the *Stretch Glass Quarterly* and many other benefits.

Celebrating 50 years (1974-2024)
Promoting & Preserving Stretch Glass.

www.stretchglassociety.org

Have you heard of Shelley China?

The National Shelley China Club is a global organization passionate about collecting and researching Shelley China. For more information, visit our website at:
www.ShelleyChinaClub.com

Cape Cod Glass Club

Established in 2001. Dedicated to the study and appreciation of glass, American and Foreign. Sponsor of Cape Cod Glass Show.

capecodglassclub.org contact: bheapp7@comcast.net

Antique Advertising Association of America

"Quad-A"

Support your hobby!
Attend Annual Conventions!
Become a member!

www.pastimes.org Info: 317.501.3832

INTERNATIONAL NIPPON COLLECTORS CLUB

WWW.NIPPONCOLLECTORSCLUB.COM
www.facebook.com/groups/nipponcollectorsclubgroup

THE MUSEUM OF AMERICAN GLASS
in West Virginia

The Museum of American Glass in WV is the nation's glass museum, with thousands of pieces on display. Open year-round Monday-Saturday, 9:30-5:00, Sunday, 1:00-5:00.
230 Main Avenue, Weston, WV 26452
www.magwv.org, 304-269-5006, glassmuse12@gmail.com
Free admission. Become a member today

Vaseline Glass Collectors, Inc.

Educating and unifying Vaseline Glass collectors everywhere since 1998. Quarterly newsletter and annual convention.

www.vaselineglass.org

Hudson Valley Depression Glass Club

413 Main Street, Beacon, NY 12508

Club Membership gives access to our monthly meeting either in person or Zoom, book library, monthly newsletter, show and tell table, and 49 year history of knowledgeable speakers that review and present a variety of glass and pottery from 1920-1970.

Jeanine Carmichael-Hill - President
845-489-2547 or email hvdgc1972@gmail.com
Facebook.com/HudsonValleyDepressionGlassClub

Early American Pattern Glass Society

Quarterly News Journal, Facebook Chat Group
National & Regional Educational Meetings
Member Contacts Coast to Coast

www.eapgs.org

Fostoria (304) 845-9188
Glass Society of America www.fostoriaglass.org

To inquire about the benefits of membership, please contact the FGSA museum at:
511 Tomlinson Avenue • Moundsville, WV 26041
March-November: Wed - Sat 1:00-4:00pm

Join & connect to a worldwide network of insulator collectors

NATIONAL INSULATOR ASSOCIATION

- Bi-Monthly Color Magazine
- Early Access to National Shows
- National Awards & Recognition
- Scholarship Opportunities
- And More! - visit www.nia.org

Andrew Gibson • membership@nia.org • (585) 335-2378
5997 Springwater Road., Dansville, NY 14437

Steuben Glass: Carder and Modern

Join the Carder Steuben Glass Association, Inc. Attend our annual Symposium, receive newsletters and visit our website containing over 6,000 photos of Steuben.

www.SteubenGlass.org

**PEACH STATE
DEPRESSION GLASS CLUB**

For info: www.PSDGC.com
Contact: president@psdgc.com

2025 Glass Show & Sale: July 26-27
Visit our website for more upcoming News & Events.

Call 508-347-1960 or email journalofantiques@gmail.com for more information or to place an ad for your club.

2 Great Shops in One Seacoast NH Destination!

Come visit our historic properties filled with a wide variety of antiques, art and collectibles. Our eclectic shops feature over 100 dealers offering buyers a true shopping destination. Accepting Dealer Applications • Tax Free NH

Route 1 Antiques



Route 1 Antiques

- Since 1975 -

106 Lafayette Road
Hampton Falls, NH 03844
(603) 601-2554

www.route1antiques.com

***Open Wed - Mon 10am-5pm
Closed Tuesdays***



The Collector's Eye



The Collector's Eye

- Since 1973 -

Antiques, Collectibles, Gifts
132 Portsmouth Avenue
Stratham, NH
(603) 772-6205

www.collectorseye.com

***Open Wed - Mon 10am-5pm
Closed Tuesdays***



30 Palmer Rd • Route 20



THE SHOPPING STARTS HERE...

3 Dealer Pavilions! Over 400 Booths

2025 DATES

May 14-18

July 9-13 • September 3-7

Wednesday–Sunday

Opens Wednesday at 6 am

Admission \$5 Opening Day • Parking Central to All Fields

Shipping • ATM • Camp Sites

Tel: 508-347-2179 or Showtime: 508-808-2023



*Look for our Green and Gold Umbrellas at our
Food Court and you will find our Field.*

Bring your appetite!

www.antiques-brimfield.com

nemotelbrimfield@gmail.com

Les, Josh and Adam Skowrya

www.facebook.com/nemotelbrimfield



Journal
OF ANTIQUES & COLLECTIBLES

113 Main Street, Unit 2
Sturbridge, MA 01566

MAKE YOUR OWN HISTORY!



Visit Historic New England's
thirty-eight properties this
summer and **discover what
history means to you.**



PLAN YOUR VISIT
HistoricNewEngland.org

**HISTORIC
NEW ENGLAND**